

LYS-5

KISA CEVAPLI
SORU ÖRNEKLERİ

Aşağıdaki soruları verilen parçaya göre cevaplayınız. Cevaplarınızı cevap kâğıdınızdaki ilgili alana yazıp kodlayınız.

TEXT-1.

Corvids, such as crows, ravens and jays, are considered the most intelligent of all birds. Tool use is common among them, but where they shine is in their social and emotional intelligence. For instance, crows point from things with their beaks to communicate their intentions to their peers. They also warn each other about potential predators. Jays can anticipate the desires of their partners and even bring them nuts as treats to please them.

SORU-1.

Find the verb in the text which means “perform very well”.

SORU-2.

The underlined pronoun “them” refers to ----.

SORU-3.

Find the preposition in the text which is incorrectly used.

SORU-1.

A	A	A	A	A	A	A	A	A	A	A	A	A	A	A
B	B	B	B	B	B	B	B	B	B	B	B	B	B	B
C	C	C	C	C	C	C	C	C	C	C	C	C	C	C
D	D	D	D	D	D	D	D	D	D	D	D	D	D	D
E	E	E	E	E	E	E	E	E	E	E	E	E	E	E
F	F	F	F	F	F	F	F	F	F	F	F	F	F	F
G	G	G	G	G	G	G	G	G	G	G	G	G	G	G
H	H	H	H	H	H	H	H	H	H	H	H	H	H	H
I	I	I	I	I	I	I	I	I	I	I	I	I	I	I
J	J	J	J	J	J	J	J	J	J	J	J	J	J	J
K	K	K	K	K	K	K	K	K	K	K	K	K	K	K
L	L	L	L	L	L	L	L	L	L	L	L	L	L	L
M	M	M	M	M	M	M	M	M	M	M	M	M	M	M
N	N	N	N	N	N	N	N	N	N	N	N	N	N	N
O	O	O	O	O	O	O	O	O	O	O	O	O	O	O
P	P	P	P	P	P	P	P	P	P	P	P	P	P	P
Q	Q	Q	Q	Q	Q	Q	Q	Q	Q	Q	Q	Q	Q	Q
R	R	R	R	R	R	R	R	R	R	R	R	R	R	R
S	S	S	S	S	S	S	S	S	S	S	S	S	S	S
T	T	T	T	T	T	T	T	T	T	T	T	T	T	T
U	U	U	U	U	U	U	U	U	U	U	U	U	U	U
V	V	V	V	V	V	V	V	V	V	V	V	V	V	V
W	W	W	W	W	W	W	W	W	W	W	W	W	W	W
X	X	X	X	X	X	X	X	X	X	X	X	X	X	X
Y	Y	Y	Y	Y	Y	Y	Y	Y	Y	Y	Y	Y	Y	Y
Z	Z	Z	Z	Z	Z	Z	Z	Z	Z	Z	Z	Z	Z	Z

SORU-2.

A	A	A	A	A	A	A	A	A	A	A	A	A	A	A
B	B	B	B	B	B	B	B	B	B	B	B	B	B	B
C	C	C	C	C	C	C	C	C	C	C	C	C	C	C
D	D	D	D	D	D	D	D	D	D	D	D	D	D	D
E	E	E	E	E	E	E	E	E	E	E	E	E	E	E
F	F	F	F	F	F	F	F	F	F	F	F	F	F	F
G	G	G	G	G	G	G	G	G	G	G	G	G	G	G
H	H	H	H	H	H	H	H	H	H	H	H	H	H	H
I	I	I	I	I	I	I	I	I	I	I	I	I	I	I
J	J	J	J	J	J	J	J	J	J	J	J	J	J	J
K	K	K	K	K	K	K	K	K	K	K	K	K	K	K
L	L	L	L	L	L	L	L	L	L	L	L	L	L	L
M	M	M	M	M	M	M	M	M	M	M	M	M	M	M
N	N	N	N	N	N	N	N	N	N	N	N	N	N	N
O	O	O	O	O	O	O	O	O	O	O	O	O	O	O
P	P	P	P	P	P	P	P	P	P	P	P	P	P	P
Q	Q	Q	Q	Q	Q	Q	Q	Q	Q	Q	Q	Q	Q	Q
R	R	R	R	R	R	R	R	R	R	R	R	R	R	R
S	S	S	S	S	S	S	S	S	S	S	S	S	S	S
T	T	T	T	T	T	T	T	T	T	T	T	T	T	T
U	U	U	U	U	U	U	U	U	U	U	U	U	U	U
V	V	V	V	V	V	V	V	V	V	V	V	V	V	V
W	W	W	W	W	W	W	W	W	W	W	W	W	W	W
X	X	X	X	X	X	X	X	X	X	X	X	X	X	X
Y	Y	Y	Y	Y	Y	Y	Y	Y	Y	Y	Y	Y	Y	Y
Z	Z	Z	Z	Z	Z	Z	Z	Z	Z	Z	Z	Z	Z	Z

SORU-3.

A	A	A	A	A	A	A	A	A	A	A	A	A	A	A
B	B	B	B	B	B	B	B	B	B	B	B	B	B	B
C	C	C	C	C	C	C	C	C	C	C	C	C	C	C
D	D	D	D	D	D	D	D	D	D	D	D	D	D	D
E	E	E	E	E	E	E	E	E	E	E	E	E	E	E
F	F	F	F	F	F	F	F	F	F	F	F	F	F	F
G	G	G	G	G	G	G	G	G	G	G	G	G	G	G
H	H	H	H	H	H	H	H	H	H	H	H	H	H	H
I	I	I	I	I	I	I	I	I	I	I	I	I	I	I
J	J	J	J	J	J	J	J	J	J	J	J	J	J	J
K	K	K	K	K	K	K	K	K	K	K	K	K	K	K
L	L	L	L	L	L	L	L	L	L	L	L	L	L	L
M	M	M	M	M	M	M	M	M	M	M	M	M	M	M
N	N	N	N	N	N	N	N	N	N	N	N	N	N	N
O	O	O	O	O	O	O	O	O	O	O	O	O	O	O
P	P	P	P	P	P	P	P	P	P	P	P	P	P	P
Q	Q	Q	Q	Q	Q	Q	Q	Q	Q	Q	Q	Q	Q	Q
R	R	R	R	R	R	R	R	R	R	R	R	R	R	R
S	S	S	S	S	S	S	S	S	S	S	S	S	S	S
T	T	T	T	T	T	T	T	T	T	T	T	T	T	T
U	U	U	U	U	U	U	U	U	U	U	U	U	U	U
V	V	V	V	V	V	V	V	V	V	V	V	V	V	V
W	W	W	W	W	W	W	W	W	W	W	W	W	W	W
X	X	X	X	X	X	X	X	X	X	X	X	X	X	X
Y	Y	Y	Y	Y	Y	Y	Y	Y	Y	Y	Y	Y	Y	Y
Z	Z	Z	Z	Z	Z	Z	Z	Z	Z	Z	Z	Z	Z	Z

Aşağıdaki soruları verilen parçaya göre cevaplayınız. Cevaplarınızı cevap kâğıdınızdaki ilgili alana yazıp kodlayınız.

TEXT-2.

World War I, known as the Great War, was a global war that was fought between 1914 and 1918. It involved most of the countries in Europe along with Russia, the USA, China and Japan. Over nine million combatants and nearly seven million civilians died in this war. It was one of the deadliest conflicts in history which led for major political changes, including revolutions. In its aftermath, four empires disappeared. Some nations regained their independence, and new ones were created.

SORU-1.

Find the noun in the text which means “fighters”.

SORU-2.

The underlined pronoun “ones” refers to ----.

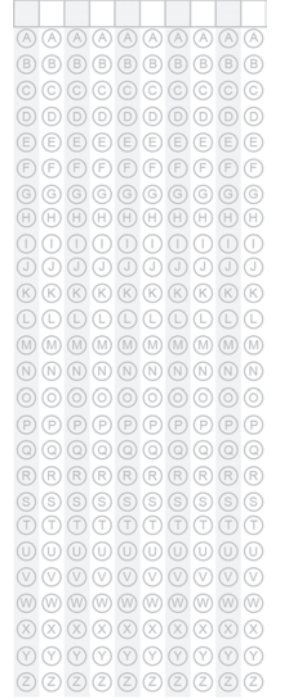
SORU-3.

Find the preposition in the text which is incorrectly used.

SORU-1.



SORU-2.



SORU-3.



Aşağıdaki soruları verilen parçaya göre cevaplayınız. Cevaplarınızı cevap kâğıdınızdaki ilgili alana yazıp kodlayınız.

TEXT-3.

Until 1973, Qatar was a poor country whose economy was based on pearl diving. After that, the emergence of oil industry moved Qatar out of the rank of the world's poorest countries, providing it with one of the highest per capita GDP. Qatar now has one of the fastest growing economies in the world. Although growth slowed down in 2012, it has taken an upward trend recently. Today, the two cornerstones of Qatar's economy are petroleum and natural gas, which account to more than 70% of the total government revenue.

SORU-1.

Find the noun in the text which means "income", "the money someone earns".

SORU-2.

The underlined pronoun "it" refers to ----.

SORU-3.

Find the preposition in the text which is incorrectly used.

SORU-1.

A	A	A	A	A	A	A	A	A	A
B	B	B	B	B	B	B	B	B	B
C	C	C	C	C	C	C	C	C	C
D	D	D	D	D	D	D	D	D	D
E	E	E	E	E	E	E	E	E	E
F	F	F	F	F	F	F	F	F	F
G	G	G	G	G	G	G	G	G	G
H	H	H	H	H	H	H	H	H	H
I	I	I	I	I	I	I	I	I	I
J	J	J	J	J	J	J	J	J	J
K	K	K	K	K	K	K	K	K	K
L	L	L	L	L	L	L	L	L	L
M	M	M	M	M	M	M	M	M	M
N	N	N	N	N	N	N	N	N	N
O	O	O	O	O	O	O	O	O	O
P	P	P	P	P	P	P	P	P	P
Q	Q	Q	Q	Q	Q	Q	Q	Q	Q
R	R	R	R	R	R	R	R	R	R
S	S	S	S	S	S	S	S	S	S
T	T	T	T	T	T	T	T	T	T
U	U	U	U	U	U	U	U	U	U
V	V	V	V	V	V	V	V	V	V
W	W	W	W	W	W	W	W	W	W
X	X	X	X	X	X	X	X	X	X
Y	Y	Y	Y	Y	Y	Y	Y	Y	Y
Z	Z	Z	Z	Z	Z	Z	Z	Z	Z

SORU-2.

A	A	A	A	A	A	A	A	A	A
B	B	B	B	B	B	B	B	B	B
C	C	C	C	C	C	C	C	C	C
D	D	D	D	D	D	D	D	D	D
E	E	E	E	E	E	E	E	E	E
F	F	F	F	F	F	F	F	F	F
G	G	G	G	G	G	G	G	G	G
H	H	H	H	H	H	H	H	H	H
I	I	I	I	I	I	I	I	I	I
J	J	J	J	J	J	J	J	J	J
K	K	K	K	K	K	K	K	K	K
L	L	L	L	L	L	L	L	L	L
M	M	M	M	M	M	M	M	M	M
N	N	N	N	N	N	N	N	N	N
O	O	O	O	O	O	O	O	O	O
P	P	P	P	P	P	P	P	P	P
Q	Q	Q	Q	Q	Q	Q	Q	Q	Q
R	R	R	R	R	R	R	R	R	R
S	S	S	S	S	S	S	S	S	S
T	T	T	T	T	T	T	T	T	T
U	U	U	U	U	U	U	U	U	U
V	V	V	V	V	V	V	V	V	V
W	W	W	W	W	W	W	W	W	W
X	X	X	X	X	X	X	X	X	X
Y	Y	Y	Y	Y	Y	Y	Y	Y	Y
Z	Z	Z	Z	Z	Z	Z	Z	Z	Z

SORU-3.

A	A	A	A	A	A	A	A	A	A
B	B	B	B	B	B	B	B	B	B
C	C	C	C	C	C	C	C	C	C
D	D	D	D	D	D	D	D	D	D
E	E	E	E	E	E	E	E	E	E
F	F	F	F	F	F	F	F	F	F
G	G	G	G	G	G	G	G	G	G
H	H	H	H	H	H	H	H	H	H
I	I	I	I	I	I	I	I	I	I
J	J	J	J	J	J	J	J	J	J
K	K	K	K	K	K	K	K	K	K
L	L	L	L	L	L	L	L	L	L
M	M	M	M	M	M	M	M	M	M
N	N	N	N	N	N	N	N	N	N
O	O	O	O	O	O	O	O	O	O
P	P	P	P	P	P	P	P	P	P
Q	Q	Q	Q	Q	Q	Q	Q	Q	Q
R	R	R	R	R	R	R	R	R	R
S	S	S	S	S	S	S	S	S	S
T	T	T	T	T	T	T	T	T	T
U	U	U	U	U	U	U	U	U	U
V	V	V	V	V	V	V	V	V	V
W	W	W	W	W	W	W	W	W	W
X	X	X	X	X	X	X	X	X	X
Y	Y	Y	Y	Y	Y	Y	Y	Y	Y
Z	Z	Z	Z	Z	Z	Z	Z	Z	Z

Aşağıdaki soruları verilen parçaya göre cevaplayınız. Cevaplarınızı cevap kâğıdınızdaki ilgili alana yazıp kodlayınız.

TEXT-4.

Many theories have been put forth for the extinction of dinosaurs. One of these suggests that dinosaurs died out soon after a huge meteorite hit the Earth. The debris thrown into the atmosphere after the collision severely altered the climate and caused the extinction of many of the species that existed on that time, including dinosaurs. This theory sounds reasonable, but most of the evidence that has been found up till now indicates that the dinosaurs had already vanished before the meteorite hit the Earth.

SORU-1.

Find the noun in the text which means "impact", "crash".

SORU 1 için Alternatif:

Which verb in the text can be replaced with the verb "disappeared"?

SORU-2.

The underlined pronoun "these" refers to ----.

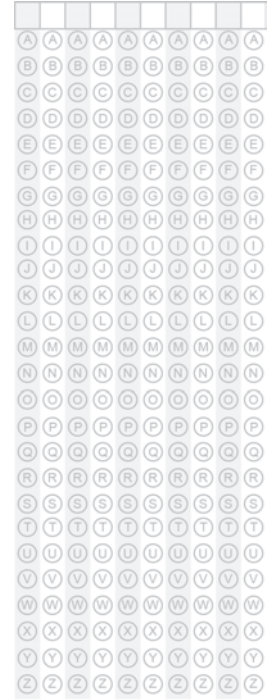
SORU-3.

Find the preposition in the text which is incorrectly used.

SORU-1.



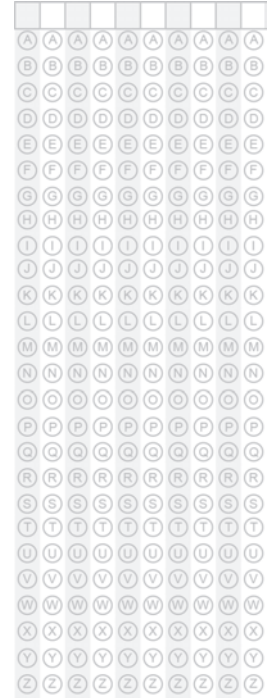
SORU-1 ALTERNATİF



SORU-2.



SORU-3.



Aşağıdaki soruları verilen parçaya göre cevaplayınız. Cevaplarınızı cevap kâğıdınızdaki ilgili alana yazıp kodlayınız.

TEXT-5.

Some people are naturally psychic. They often see into the future and thus can predict events before they happen. Yet, many of those people either don't recognize the symptoms of their psychic senses or ignore them, taking their psychic experiences as mere coincidences. There are some, however, who acknowledge the fact that they have some sort of power and are rather earnest about it. They try to enhance it through techniques like meditation and some books on the subject or search for ways to keep their abilities over control.

SORU-1.

Find the verb in the text which means "improve", "strengthen".

SORU 1 için Alternatif:

Complete the sentence below by using only one word from the text.

"The atmosphere of large classrooms may distract even the most ---- student from concentrating on the lecture."

SORU-2.

The underlined pronoun "it" refers to ----.

SORU-3.

Find the preposition in the text which is incorrectly used.

SORU-1.

A	A	A	A	A	A	A	A	A	A
B	B	B	B	B	B	B	B	B	B
C	C	C	C	C	C	C	C	C	C
D	D	D	D	D	D	D	D	D	D
E	E	E	E	E	E	E	E	E	E
F	F	F	F	F	F	F	F	F	F
G	G	G	G	G	G	G	G	G	G
H	H	H	H	H	H	H	H	H	H
I	I	I	I	I	I	I	I	I	I
J	J	J	J	J	J	J	J	J	J
K	K	K	K	K	K	K	K	K	K
L	L	L	L	L	L	L	L	L	L
M	M	M	M	M	M	M	M	M	M
N	N	N	N	N	N	N	N	N	N
O	O	O	O	O	O	O	O	O	O
P	P	P	P	P	P	P	P	P	P
Q	Q	Q	Q	Q	Q	Q	Q	Q	Q
R	R	R	R	R	R	R	R	R	R
S	S	S	S	S	S	S	S	S	S
T	T	T	T	T	T	T	T	T	T
U	U	U	U	U	U	U	U	U	U
V	V	V	V	V	V	V	V	V	V
W	W	W	W	W	W	W	W	W	W
X	X	X	X	X	X	X	X	X	X
Y	Y	Y	Y	Y	Y	Y	Y	Y	Y
Z	Z	Z	Z	Z	Z	Z	Z	Z	Z

SORU-1 ALTERNATİF

A	A	A	A	A	A	A	A	A	A
B	B	B	B	B	B	B	B	B	B
C	C	C	C	C	C	C	C	C	C
D	D	D	D	D	D	D	D	D	D
E	E	E	E	E	E	E	E	E	E
F	F	F	F	F	F	F	F	F	F
G	G	G	G	G	G	G	G	G	G
H	H	H	H	H	H	H	H	H	H
I	I	I	I	I	I	I	I	I	I
J	J	J	J	J	J	J	J	J	J
K	K	K	K	K	K	K	K	K	K
L	L	L	L	L	L	L	L	L	L
M	M	M	M	M	M	M	M	M	M
N	N	N	N	N	N	N	N	N	N
O	O	O	O	O	O	O	O	O	O
P	P	P	P	P	P	P	P	P	P
Q	Q	Q	Q	Q	Q	Q	Q	Q	Q
R	R	R	R	R	R	R	R	R	R
S	S	S	S	S	S	S	S	S	S
T	T	T	T	T	T	T	T	T	T
U	U	U	U	U	U	U	U	U	U
V	V	V	V	V	V	V	V	V	V
W	W	W	W	W	W	W	W	W	W
X	X	X	X	X	X	X	X	X	X
Y	Y	Y	Y	Y	Y	Y	Y	Y	Y
Z	Z	Z	Z	Z	Z	Z	Z	Z	Z

SORU-2.

A	A	A	A	A	A	A	A	A	A
B	B	B	B	B	B	B	B	B	B
C	C	C	C	C	C	C	C	C	C
D	D	D	D	D	D	D	D	D	D
E	E	E	E	E	E	E	E	E	E
F	F	F	F	F	F	F	F	F	F
G	G	G	G	G	G	G	G	G	G
H	H	H	H	H	H	H	H	H	H
I	I	I	I	I	I	I	I	I	I
J	J	J	J	J	J	J	J	J	J
K	K	K	K	K	K	K	K	K	K
L	L	L	L	L	L	L	L	L	L
M	M	M	M	M	M	M	M	M	M
N	N	N	N	N	N	N	N	N	N
O	O	O	O	O	O	O	O	O	O
P	P	P	P	P	P	P	P	P	P
Q	Q	Q	Q	Q	Q	Q	Q	Q	Q
R	R	R	R	R	R	R	R	R	R
S	S	S	S	S	S	S	S	S	S
T	T	T	T	T	T	T	T	T	T
U	U	U	U	U	U	U	U	U	U
V	V	V	V	V	V	V	V	V	V
W	W	W	W	W	W	W	W	W	W
X	X	X	X	X	X	X	X	X	X
Y	Y	Y	Y	Y	Y	Y	Y	Y	Y
Z	Z	Z	Z	Z	Z	Z	Z	Z	Z

SORU-3.

A	A	A	A	A	A	A	A	A	A
B	B	B	B	B	B	B	B	B	B
C	C	C	C	C	C	C	C	C	C
D	D	D	D	D	D	D	D	D	D
E	E	E	E	E	E	E	E	E	E
F	F	F	F	F	F	F	F	F	F
G	G	G	G	G	G	G	G	G	G
H	H	H	H	H	H	H	H	H	H
I	I	I	I	I	I	I	I	I	I
J	J	J	J	J	J	J	J	J	J
K	K	K	K	K	K	K	K	K	K
L	L	L	L	L	L	L	L	L	L
M	M	M	M	M	M	M	M	M	M
N	N	N	N	N	N	N	N	N	N
O	O	O	O	O	O	O	O	O	O
P	P	P	P	P	P	P	P	P	P
Q	Q	Q	Q	Q	Q	Q	Q	Q	Q
R	R	R	R	R	R	R	R	R	R
S	S	S	S	S	S	S	S	S	S
T	T	T	T	T	T	T	T	T	T
U	U	U	U	U	U	U	U	U	U
V	V	V	V	V	V	V	V	V	V
W	W	W	W	W	W	W	W	W	W
X	X	X	X	X	X	X	X	X	X
Y	Y	Y	Y	Y	Y	Y	Y	Y	Y
Z	Z	Z	Z	Z	Z	Z	Z	Z	Z

Aşağıdaki soruları verilen parçaya göre cevaplayınız. Cevaplarınızı cevap kâğıdınızdaki ilgili alana yazıp kodlayınız.

TEXT-6.

The so-called superfoods, like walnuts, broccoli and spinach, are said to be nutritionally dense and contain large doses of vitamins, minerals and antioxidants. It is claimed that they promote health, prevent diseases and prolong life. That is why, those who are keen from staying healthy and young somehow fit them into their daily diets to consume more of them. Yet, the term “superfood” is not in common use by dietitians. They see it as more of a marketing term for foods with health benefits, and many people choose to believe them.

SORU-1.

Find the verb in the text which means “make longer”, “extend”.

SORU 1 için Alternatif:

Find the verb in the text which means the opposite of “harm”, “worsen”.

SORU-2.

The underlined pronoun “them” refers to ----.

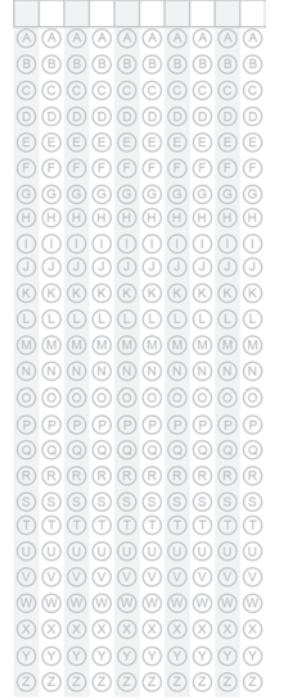
SORU-3.

Find the preposition in the text which is incorrectly used.

SORU-1.



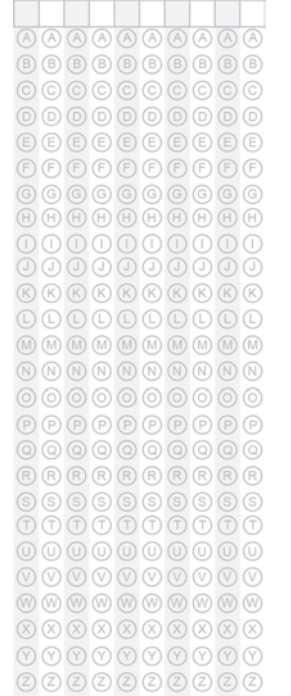
SORU-1 ALTERNATİF



SORU-2.



SORU-3.



Aşağıdaki soruları verilen parçaya göre cevaplayınız. Cevaplarınızı cevap kâğıdınızdaki ilgili alana yazıp kodlayınız.

TEXT-7.

Being president of the United States seems amazingly advantageous. Firstly, the average net worth of a U.S. president is 200 times more than that of a U.S. citizen. Overall, presidential wealth has gone through notable trends over time. Many of the earlier presidents had made their fortunes before entering the White House. With contrast, most of the modern ones were modestly well-off when they came into office, but significantly boosted their finances during their presidency, generally through public speaking and book deals.

SORU-1.

Find the adverb in the text which means “slightly”, “to a certain degree”.

SORU-2.

The underlined pronoun “ones” refers to ----.

SORU-3.

Find the preposition in the text which is incorrectly used.

SORU-1.

A	A	A	A	A	A	A	A	A	A	A
B	B	B	B	B	B	B	B	B	B	B
C	C	C	C	C	C	C	C	C	C	C
D	D	D	D	D	D	D	D	D	D	D
E	E	E	E	E	E	E	E	E	E	E
F	F	F	F	F	F	F	F	F	F	F
G	G	G	G	G	G	G	G	G	G	G
H	H	H	H	H	H	H	H	H	H	H
I	I	I	I	I	I	I	I	I	I	I
J	J	J	J	J	J	J	J	J	J	J
K	K	K	K	K	K	K	K	K	K	K
L	L	L	L	L	L	L	L	L	L	L
M	M	M	M	M	M	M	M	M	M	M
N	N	N	N	N	N	N	N	N	N	N
O	O	O	O	O	O	O	O	O	O	O
P	P	P	P	P	P	P	P	P	P	P
Q	Q	Q	Q	Q	Q	Q	Q	Q	Q	Q
R	R	R	R	R	R	R	R	R	R	R
S	S	S	S	S	S	S	S	S	S	S
T	T	T	T	T	T	T	T	T	T	T
U	U	U	U	U	U	U	U	U	U	U
V	V	V	V	V	V	V	V	V	V	V
W	W	W	W	W	W	W	W	W	W	W
X	X	X	X	X	X	X	X	X	X	X
Y	Y	Y	Y	Y	Y	Y	Y	Y	Y	Y
Z	Z	Z	Z	Z	Z	Z	Z	Z	Z	Z

SORU-2.

A	A	A	A	A	A	A	A	A	A	A
B	B	B	B	B	B	B	B	B	B	B
C	C	C	C	C	C	C	C	C	C	C
D	D	D	D	D	D	D	D	D	D	D
E	E	E	E	E	E	E	E	E	E	E
F	F	F	F	F	F	F	F	F	F	F
G	G	G	G	G	G	G	G	G	G	G
H	H	H	H	H	H	H	H	H	H	H
I	I	I	I	I	I	I	I	I	I	I
J	J	J	J	J	J	J	J	J	J	J
K	K	K	K	K	K	K	K	K	K	K
L	L	L	L	L	L	L	L	L	L	L
M	M	M	M	M	M	M	M	M	M	M
N	N	N	N	N	N	N	N	N	N	N
O	O	O	O	O	O	O	O	O	O	O
P	P	P	P	P	P	P	P	P	P	P
Q	Q	Q	Q	Q	Q	Q	Q	Q	Q	Q
R	R	R	R	R	R	R	R	R	R	R
S	S	S	S	S	S	S	S	S	S	S
T	T	T	T	T	T	T	T	T	T	T
U	U	U	U	U	U	U	U	U	U	U
V	V	V	V	V	V	V	V	V	V	V
W	W	W	W	W	W	W	W	W	W	W
X	X	X	X	X	X	X	X	X	X	X
Y	Y	Y	Y	Y	Y	Y	Y	Y	Y	Y
Z	Z	Z	Z	Z	Z	Z	Z	Z	Z	Z

SORU-3.

A	A	A	A	A	A	A	A	A	A	A
B	B	B	B	B	B	B	B	B	B	B
C	C	C	C	C	C	C	C	C	C	C
D	D	D	D	D	D	D	D	D	D	D
E	E	E	E	E	E	E	E	E	E	E
F	F	F	F	F	F	F	F	F	F	F
G	G	G	G	G	G	G	G	G	G	G
H	H	H	H	H	H	H	H	H	H	H
I	I	I	I	I	I	I	I	I	I	I
J	J	J	J	J	J	J	J	J	J	J
K	K	K	K	K	K	K	K	K	K	K
L	L	L	L	L	L	L	L	L	L	L
M	M	M	M	M	M	M	M	M	M	M
N	N	N	N	N	N	N	N	N	N	N
O	O	O	O	O	O	O	O	O	O	O
P	P	P	P	P	P	P	P	P	P	P
Q	Q	Q	Q	Q	Q	Q	Q	Q	Q	Q
R	R	R	R	R	R	R	R	R	R	R
S	S	S	S	S	S	S	S	S	S	S
T	T	T	T	T	T	T	T	T	T	T
U	U	U	U	U	U	U	U	U	U	U
V	V	V	V	V	V	V	V	V	V	V
W	W	W	W	W	W	W	W	W	W	W
X	X	X	X	X	X	X	X	X	X	X
Y	Y	Y	Y	Y	Y	Y	Y	Y	Y	Y
Z	Z	Z	Z	Z	Z	Z	Z	Z	Z	Z

Aşağıdaki soruları verilen parçaya göre cevaplayınız. Cevaplarınızı cevap kâğıdınızdaki ilgili alana yazıp kodlayınız.

TEXT-8.

There is evidence that some animals can recognize faces. Sheep have been proved to be able to recognize human faces as well as those of other sheep. Studies show that domesticated animals can distinguish between the faces of humans with whom they interact regularly and that some can even recall and identify them after years of absence. There is also evidence that some birds are capable from facial recognition, especially when it comes to humans who threaten them in some way.

SORU-1.

Find the verb in the text which means “communicate”.

SORU-2.

The underlined pronoun “those” refers to ----.

SORU 2 için Alternatif:

The underlined pronoun “whom” refers to ----.

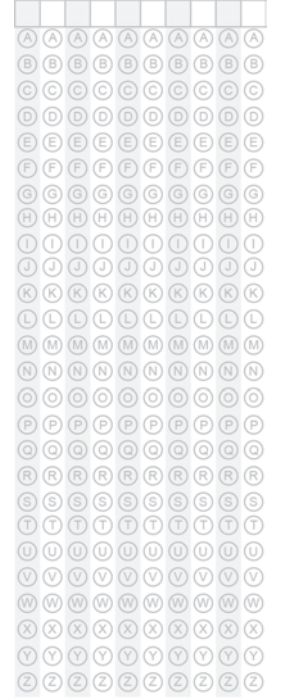
SORU-3.

Find the preposition in the text which is incorrectly used.

SORU-1.



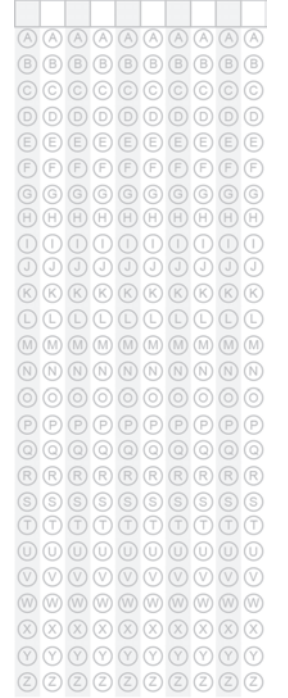
SORU-2.



SORU-2 ALTERNATİF



SORU-3.



Aşağıdaki soruları verilen parçaya göre cevaplayınız. Cevaplarınızı cevap kâğıdınızdaki ilgili alana yazıp kodlayınız.

TEXT-9.

Some of the typical social customs in Europe and the United States may be offensive elsewhere and can even cause one trouble during a visit to a country in the East. For example, tipping, which is a controversial practice even in the United States, is considered an insult in Japan. Japanese workers feel they are getting paid for their job and are proud with doing it well. However, Americans think tipping is essential and that it is expected by those who are dependent on tips besides their salaries, which are generally not very high.

SORU-1.

Find the adjective in the text which means the opposite of “respectful”, “pleasant”.

SORU-2.

The underlined pronoun “which” refers to ----.

SORU-3.

Find the preposition in the text which is incorrectly used.

SORU-1.

A	A	A	A	A	A	A	A	A	A
B	B	B	B	B	B	B	B	B	B
C	C	C	C	C	C	C	C	C	C
D	D	D	D	D	D	D	D	D	D
E	E	E	E	E	E	E	E	E	E
F	F	F	F	F	F	F	F	F	F
G	G	G	G	G	G	G	G	G	G
H	H	H	H	H	H	H	H	H	H
I	I	I	I	I	I	I	I	I	I
J	J	J	J	J	J	J	J	J	J
K	K	K	K	K	K	K	K	K	K
L	L	L	L	L	L	L	L	L	L
M	M	M	M	M	M	M	M	M	M
N	N	N	N	N	N	N	N	N	N
O	O	O	O	O	O	O	O	O	O
P	P	P	P	P	P	P	P	P	P
Q	Q	Q	Q	Q	Q	Q	Q	Q	Q
R	R	R	R	R	R	R	R	R	R
S	S	S	S	S	S	S	S	S	S
T	T	T	T	T	T	T	T	T	T
U	U	U	U	U	U	U	U	U	U
V	V	V	V	V	V	V	V	V	V
W	W	W	W	W	W	W	W	W	W
X	X	X	X	X	X	X	X	X	X
Y	Y	Y	Y	Y	Y	Y	Y	Y	Y
Z	Z	Z	Z	Z	Z	Z	Z	Z	Z

SORU-2.

A	A	A	A	A	A	A	A	A	A
B	B	B	B	B	B	B	B	B	B
C	C	C	C	C	C	C	C	C	C
D	D	D	D	D	D	D	D	D	D
E	E	E	E	E	E	E	E	E	E
F	F	F	F	F	F	F	F	F	F
G	G	G	G	G	G	G	G	G	G
H	H	H	H	H	H	H	H	H	H
I	I	I	I	I	I	I	I	I	I
J	J	J	J	J	J	J	J	J	J
K	K	K	K	K	K	K	K	K	K
L	L	L	L	L	L	L	L	L	L
M	M	M	M	M	M	M	M	M	M
N	N	N	N	N	N	N	N	N	N
O	O	O	O	O	O	O	O	O	O
P	P	P	P	P	P	P	P	P	P
Q	Q	Q	Q	Q	Q	Q	Q	Q	Q
R	R	R	R	R	R	R	R	R	R
S	S	S	S	S	S	S	S	S	S
T	T	T	T	T	T	T	T	T	T
U	U	U	U	U	U	U	U	U	U
V	V	V	V	V	V	V	V	V	V
W	W	W	W	W	W	W	W	W	W
X	X	X	X	X	X	X	X	X	X
Y	Y	Y	Y	Y	Y	Y	Y	Y	Y
Z	Z	Z	Z	Z	Z	Z	Z	Z	Z

SORU-3.

A	A	A	A	A	A	A	A	A	A
B	B	B	B	B	B	B	B	B	B
C	C	C	C	C	C	C	C	C	C
D	D	D	D	D	D	D	D	D	D
E	E	E	E	E	E	E	E	E	E
F	F	F	F	F	F	F	F	F	F
G	G	G	G	G	G	G	G	G	G
H	H	H	H	H	H	H	H	H	H
I	I	I	I	I	I	I	I	I	I
J	J	J	J	J	J	J	J	J	J
K	K	K	K	K	K	K	K	K	K
L	L	L	L	L	L	L	L	L	L
M	M	M	M	M	M	M	M	M	M
N	N	N	N	N	N	N	N	N	N
O	O	O	O	O	O	O	O	O	O
P	P	P	P	P	P	P	P	P	P
Q	Q	Q	Q	Q	Q	Q	Q	Q	Q
R	R	R	R	R	R	R	R	R	R
S	S	S	S	S	S	S	S	S	S
T	T	T	T	T	T	T	T	T	T
U	U	U	U	U	U	U	U	U	U
V	V	V	V	V	V	V	V	V	V
W	W	W	W	W	W	W	W	W	W
X	X	X	X	X	X	X	X	X	X
Y	Y	Y	Y	Y	Y	Y	Y	Y	Y
Z	Z	Z	Z	Z	Z	Z	Z	Z	Z

Aşağıdaki soruları verilen parçaya göre cevaplayınız. Cevaplarınızı cevap kâğıdınızdaki ilgili alana yazıp kodlayınız.

TEXT-10.

While illness and disease both cause discomfort and pain, an illness is rather a subjective feeling. It is a physical state rather than a condition. The reason behind it may not be identifiable. However, a disease is a specific medical condition that obstructs bodily function. On many cases, though, a person suffering from a disease may not have any apparent symptoms until diagnosis. In a broader sense, deviant behaviour is also classified by many as a disease and not a mental illness.

SORU-1.

Find the adjective in the text which means "obvious", "clear".

SORU-2.

The underlined pronoun "it" refers to ----.

SORU-3.

Find the preposition in the text which is incorrectly used.

SORU-1.

A	A	A	A	A	A	A	A	A	A
B	B	B	B	B	B	B	B	B	B
C	C	C	C	C	C	C	C	C	C
D	D	D	D	D	D	D	D	D	D
E	E	E	E	E	E	E	E	E	E
F	F	F	F	F	F	F	F	F	F
G	G	G	G	G	G	G	G	G	G
H	H	H	H	H	H	H	H	H	H
I	I	I	I	I	I	I	I	I	I
J	J	J	J	J	J	J	J	J	J
K	K	K	K	K	K	K	K	K	K
L	L	L	L	L	L	L	L	L	L
M	M	M	M	M	M	M	M	M	M
N	N	N	N	N	N	N	N	N	N
O	O	O	O	O	O	O	O	O	O
P	P	P	P	P	P	P	P	P	P
Q	Q	Q	Q	Q	Q	Q	Q	Q	Q
R	R	R	R	R	R	R	R	R	R
S	S	S	S	S	S	S	S	S	S
T	T	T	T	T	T	T	T	T	T
U	U	U	U	U	U	U	U	U	U
V	V	V	V	V	V	V	V	V	V
W	W	W	W	W	W	W	W	W	W
X	X	X	X	X	X	X	X	X	X
Y	Y	Y	Y	Y	Y	Y	Y	Y	Y
Z	Z	Z	Z	Z	Z	Z	Z	Z	Z

SORU-2.

A	A	A	A	A	A	A	A	A	A
B	B	B	B	B	B	B	B	B	B
C	C	C	C	C	C	C	C	C	C
D	D	D	D	D	D	D	D	D	D
E	E	E	E	E	E	E	E	E	E
F	F	F	F	F	F	F	F	F	F
G	G	G	G	G	G	G	G	G	G
H	H	H	H	H	H	H	H	H	H
I	I	I	I	I	I	I	I	I	I
J	J	J	J	J	J	J	J	J	J
K	K	K	K	K	K	K	K	K	K
L	L	L	L	L	L	L	L	L	L
M	M	M	M	M	M	M	M	M	M
N	N	N	N	N	N	N	N	N	N
O	O	O	O	O	O	O	O	O	O
P	P	P	P	P	P	P	P	P	P
Q	Q	Q	Q	Q	Q	Q	Q	Q	Q
R	R	R	R	R	R	R	R	R	R
S	S	S	S	S	S	S	S	S	S
T	T	T	T	T	T	T	T	T	T
U	U	U	U	U	U	U	U	U	U
V	V	V	V	V	V	V	V	V	V
W	W	W	W	W	W	W	W	W	W
X	X	X	X	X	X	X	X	X	X
Y	Y	Y	Y	Y	Y	Y	Y	Y	Y
Z	Z	Z	Z	Z	Z	Z	Z	Z	Z

SORU-3.

A	A	A	A	A	A	A	A	A	A
B	B	B	B	B	B	B	B	B	B
C	C	C	C	C	C	C	C	C	C
D	D	D	D	D	D	D	D	D	D
E	E	E	E	E	E	E	E	E	E
F	F	F	F	F	F	F	F	F	F
G	G	G	G	G	G	G	G	G	G
H	H	H	H	H	H	H	H	H	H
I	I	I	I	I	I	I	I	I	I
J	J	J	J	J	J	J	J	J	J
K	K	K	K	K	K	K	K	K	K
L	L	L	L	L	L	L	L	L	L
M	M	M	M	M	M	M	M	M	M
N	N	N	N	N	N	N	N	N	N
O	O	O	O	O	O	O	O	O	O
P	P	P	P	P	P	P	P	P	P
Q	Q	Q	Q	Q	Q	Q	Q	Q	Q
R	R	R	R	R	R	R	R	R	R
S	S	S	S	S	S	S	S	S	S
T	T	T	T	T	T	T	T	T	T
U	U	U	U	U	U	U	U	U	U
V	V	V	V	V	V	V	V	V	V
W	W	W	W	W	W	W	W	W	W
X	X	X	X	X	X	X	X	X	X
Y	Y	Y	Y	Y	Y	Y	Y	Y	Y
Z	Z	Z	Z	Z	Z	Z	Z	Z	Z

Aşağıdaki soruları verilen parçaya göre cevaplayınız. Cevaplarınızı cevap kâğıdınızdaki ilgili alana yazıp kodlayınız.

TEXT-11.

A clown is a comic entertainer, dressed with funny, brightly-coloured, floppy clothes and having colourful make-up on. Clowns pretend to be foolish; their idiotic behaviour, as well as their eccentric look, is aimed at entertaining large audiences, most of whom are children, by doing silly or ridiculous tricks. The style of the amusing acts they perform may vary from culture to culture across the world.

SORU-1.

Find the adjective in the text which means the opposite of “ordinary”, “common”.

SORU-2.

The underlined pronoun “they” refers to ----.

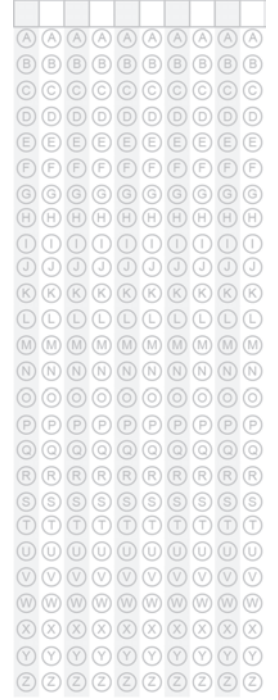
SORU-3.

Find the preposition in the text which is incorrectly used.

SORU-1.



SORU-2.



SORU-3.



Aşağıdaki soruları verilen parçaya göre cevaplayınız. Cevaplarınızı cevap kâğıdınızdaki ilgili alana yazıp kodlayınız.

TEXT-12.

Antisocial personality disorder is characterized by a long-lasting pattern of disregard for other people's rights. People from this type of disorder lack concern about the feelings of others and often feel no empathy towards them. The disorder usually begins in childhood or adolescence and continues into adulthood. As in other types of personality disorder, the symptoms of antisocial personality disorder can vary in severity. They appear either as occasional bad behaviour or as repeated criminal behaviour.

SORU-1.

Find the noun in the text which means the opposite of "respect".

SORU-2.

The underlined pronoun "They" refers to ----.

SORU-3.

Find the preposition in the text which is incorrectly used.

SORU-1.

A	A	A	A	A	A	A	A	A	A
B	B	B	B	B	B	B	B	B	B
C	C	C	C	C	C	C	C	C	C
D	D	D	D	D	D	D	D	D	D
E	E	E	E	E	E	E	E	E	E
F	F	F	F	F	F	F	F	F	F
G	G	G	G	G	G	G	G	G	G
H	H	H	H	H	H	H	H	H	H
I	I	I	I	I	I	I	I	I	I
J	J	J	J	J	J	J	J	J	J
K	K	K	K	K	K	K	K	K	K
L	L	L	L	L	L	L	L	L	L
M	M	M	M	M	M	M	M	M	M
N	N	N	N	N	N	N	N	N	N
O	O	O	O	O	O	O	O	O	O
P	P	P	P	P	P	P	P	P	P
Q	Q	Q	Q	Q	Q	Q	Q	Q	Q
R	R	R	R	R	R	R	R	R	R
S	S	S	S	S	S	S	S	S	S
T	T	T	T	T	T	T	T	T	T
U	U	U	U	U	U	U	U	U	U
V	V	V	V	V	V	V	V	V	V
W	W	W	W	W	W	W	W	W	W
X	X	X	X	X	X	X	X	X	X
Y	Y	Y	Y	Y	Y	Y	Y	Y	Y
Z	Z	Z	Z	Z	Z	Z	Z	Z	Z

SORU-2.

A	A	A	A	A	A	A	A	A	A
B	B	B	B	B	B	B	B	B	B
C	C	C	C	C	C	C	C	C	C
D	D	D	D	D	D	D	D	D	D
E	E	E	E	E	E	E	E	E	E
F	F	F	F	F	F	F	F	F	F
G	G	G	G	G	G	G	G	G	G
H	H	H	H	H	H	H	H	H	H
I	I	I	I	I	I	I	I	I	I
J	J	J	J	J	J	J	J	J	J
K	K	K	K	K	K	K	K	K	K
L	L	L	L	L	L	L	L	L	L
M	M	M	M	M	M	M	M	M	M
N	N	N	N	N	N	N	N	N	N
O	O	O	O	O	O	O	O	O	O
P	P	P	P	P	P	P	P	P	P
Q	Q	Q	Q	Q	Q	Q	Q	Q	Q
R	R	R	R	R	R	R	R	R	R
S	S	S	S	S	S	S	S	S	S
T	T	T	T	T	T	T	T	T	T
U	U	U	U	U	U	U	U	U	U
V	V	V	V	V	V	V	V	V	V
W	W	W	W	W	W	W	W	W	W
X	X	X	X	X	X	X	X	X	X
Y	Y	Y	Y	Y	Y	Y	Y	Y	Y
Z	Z	Z	Z	Z	Z	Z	Z	Z	Z

SORU-3.

A	A	A	A	A	A	A	A	A	A
B	B	B	B	B	B	B	B	B	B
C	C	C	C	C	C	C	C	C	C
D	D	D	D	D	D	D	D	D	D
E	E	E	E	E	E	E	E	E	E
F	F	F	F	F	F	F	F	F	F
G	G	G	G	G	G	G	G	G	G
H	H	H	H	H	H	H	H	H	H
I	I	I	I	I	I	I	I	I	I
J	J	J	J	J	J	J	J	J	J
K	K	K	K	K	K	K	K	K	K
L	L	L	L	L	L	L	L	L	L
M	M	M	M	M	M	M	M	M	M
N	N	N	N	N	N	N	N	N	N
O	O	O	O	O	O	O	O	O	O
P	P	P	P	P	P	P	P	P	P
Q	Q	Q	Q	Q	Q	Q	Q	Q	Q
R	R	R	R	R	R	R	R	R	R
S	S	S	S	S	S	S	S	S	S
T	T	T	T	T	T	T	T	T	T
U	U	U	U	U	U	U	U	U	U
V	V	V	V	V	V	V	V	V	V
W	W	W	W	W	W	W	W	W	W
X	X	X	X	X	X	X	X	X	X
Y	Y	Y	Y	Y	Y	Y	Y	Y	Y
Z	Z	Z	Z	Z	Z	Z	Z	Z	Z

Aşağıdaki soruları verilen parçaya göre cevaplayınız. Cevaplarınızı cevap kâğıdınızdaki ilgili alana yazıp kodlayınız.

TEXT-13.

While there are over 15 countries where the citizens can expect to live past the age of 80, in many countries, life expectancy is still below the age of 40. One of the biggest factors that contribute for lower lifespan, apart from war and civil strife, is disease, which is closely related to poverty, and it affects the health of a large proportion of the population in many poor countries that lack proper sanitation, and trash or waste removal systems.

SORU-1.

Find the noun in the text which means “violent conflict” or “fighting”.

SORU-2.

The underlined pronoun “it” refers to ----.

SORU-3.

Find the preposition in the text which is incorrectly used.

SORU-1.

A	A	A	A	A	A	A	A	A	A
B	B	B	B	B	B	B	B	B	B
C	C	C	C	C	C	C	C	C	C
D	D	D	D	D	D	D	D	D	D
E	E	E	E	E	E	E	E	E	E
F	F	F	F	F	F	F	F	F	F
G	G	G	G	G	G	G	G	G	G
H	H	H	H	H	H	H	H	H	H
I	I	I	I	I	I	I	I	I	I
J	J	J	J	J	J	J	J	J	J
K	K	K	K	K	K	K	K	K	K
L	L	L	L	L	L	L	L	L	L
M	M	M	M	M	M	M	M	M	M
N	N	N	N	N	N	N	N	N	N
O	O	O	O	O	O	O	O	O	O
P	P	P	P	P	P	P	P	P	P
Q	Q	Q	Q	Q	Q	Q	Q	Q	Q
R	R	R	R	R	R	R	R	R	R
S	S	S	S	S	S	S	S	S	S
T	T	T	T	T	T	T	T	T	T
U	U	U	U	U	U	U	U	U	U
V	V	V	V	V	V	V	V	V	V
W	W	W	W	W	W	W	W	W	W
X	X	X	X	X	X	X	X	X	X
Y	Y	Y	Y	Y	Y	Y	Y	Y	Y
Z	Z	Z	Z	Z	Z	Z	Z	Z	Z

SORU-2.

A	A	A	A	A	A	A	A	A	A
B	B	B	B	B	B	B	B	B	B
C	C	C	C	C	C	C	C	C	C
D	D	D	D	D	D	D	D	D	D
E	E	E	E	E	E	E	E	E	E
F	F	F	F	F	F	F	F	F	F
G	G	G	G	G	G	G	G	G	G
H	H	H	H	H	H	H	H	H	H
I	I	I	I	I	I	I	I	I	I
J	J	J	J	J	J	J	J	J	J
K	K	K	K	K	K	K	K	K	K
L	L	L	L	L	L	L	L	L	L
M	M	M	M	M	M	M	M	M	M
N	N	N	N	N	N	N	N	N	N
O	O	O	O	O	O	O	O	O	O
P	P	P	P	P	P	P	P	P	P
Q	Q	Q	Q	Q	Q	Q	Q	Q	Q
R	R	R	R	R	R	R	R	R	R
S	S	S	S	S	S	S	S	S	S
T	T	T	T	T	T	T	T	T	T
U	U	U	U	U	U	U	U	U	U
V	V	V	V	V	V	V	V	V	V
W	W	W	W	W	W	W	W	W	W
X	X	X	X	X	X	X	X	X	X
Y	Y	Y	Y	Y	Y	Y	Y	Y	Y
Z	Z	Z	Z	Z	Z	Z	Z	Z	Z

SORU-3.

A	A	A	A	A	A	A	A	A	A
B	B	B	B	B	B	B	B	B	B
C	C	C	C	C	C	C	C	C	C
D	D	D	D	D	D	D	D	D	D
E	E	E	E	E	E	E	E	E	E
F	F	F	F	F	F	F	F	F	F
G	G	G	G	G	G	G	G	G	G
H	H	H	H	H	H	H	H	H	H
I	I	I	I	I	I	I	I	I	I
J	J	J	J	J	J	J	J	J	J
K	K	K	K	K	K	K	K	K	K
L	L	L	L	L	L	L	L	L	L
M	M	M	M	M	M	M	M	M	M
N	N	N	N	N	N	N	N	N	N
O	O	O	O	O	O	O	O	O	O
P	P	P	P	P	P	P	P	P	P
Q	Q	Q	Q	Q	Q	Q	Q	Q	Q
R	R	R	R	R	R	R	R	R	R
S	S	S	S	S	S	S	S	S	S
T	T	T	T	T	T	T	T	T	T
U	U	U	U	U	U	U	U	U	U
V	V	V	V	V	V	V	V	V	V
W	W	W	W	W	W	W	W	W	W
X	X	X	X	X	X	X	X	X	X
Y	Y	Y	Y	Y	Y	Y	Y	Y	Y
Z	Z	Z	Z	Z	Z	Z	Z	Z	Z

Aşağıdaki soruları verilen parçaya göre cevaplayınız. Cevaplarınızı cevap kâğıdınızdaki ilgili alana yazıp kodlayınız.

TEXT-14.

Many of us often wish we could quit our jobs and earn money by doing something we enjoy. We may fantasize about turning our favourite pastime or our passion into a profession and profit from it. However, it is a little bit hard to achieve this. It takes planning and hard work. Unless we're well-off, we can't just change our career to pursue a new one without training for it. We need to acquire the right skills in order to succeed on it.

SORU-1.

Find the verb in the text which means "earn money", "benefit financially".

SORU-2.

The underlined pronoun "one" refers to ----.

SORU-3.

Find the preposition in the text which is incorrectly used.

SORU-1.

A	A	A	A	A	A	A	A	A	A
B	B	B	B	B	B	B	B	B	B
C	C	C	C	C	C	C	C	C	C
D	D	D	D	D	D	D	D	D	D
E	E	E	E	E	E	E	E	E	E
F	F	F	F	F	F	F	F	F	F
G	G	G	G	G	G	G	G	G	G
H	H	H	H	H	H	H	H	H	H
I	I	I	I	I	I	I	I	I	I
J	J	J	J	J	J	J	J	J	J
K	K	K	K	K	K	K	K	K	K
L	L	L	L	L	L	L	L	L	L
M	M	M	M	M	M	M	M	M	M
N	N	N	N	N	N	N	N	N	N
O	O	O	O	O	O	O	O	O	O
P	P	P	P	P	P	P	P	P	P
Q	Q	Q	Q	Q	Q	Q	Q	Q	Q
R	R	R	R	R	R	R	R	R	R
S	S	S	S	S	S	S	S	S	S
T	T	T	T	T	T	T	T	T	T
U	U	U	U	U	U	U	U	U	U
V	V	V	V	V	V	V	V	V	V
W	W	W	W	W	W	W	W	W	W
X	X	X	X	X	X	X	X	X	X
Y	Y	Y	Y	Y	Y	Y	Y	Y	Y
Z	Z	Z	Z	Z	Z	Z	Z	Z	Z

SORU-2.

A	A	A	A	A	A	A	A	A	A
B	B	B	B	B	B	B	B	B	B
C	C	C	C	C	C	C	C	C	C
D	D	D	D	D	D	D	D	D	D
E	E	E	E	E	E	E	E	E	E
F	F	F	F	F	F	F	F	F	F
G	G	G	G	G	G	G	G	G	G
H	H	H	H	H	H	H	H	H	H
I	I	I	I	I	I	I	I	I	I
J	J	J	J	J	J	J	J	J	J
K	K	K	K	K	K	K	K	K	K
L	L	L	L	L	L	L	L	L	L
M	M	M	M	M	M	M	M	M	M
N	N	N	N	N	N	N	N	N	N
O	O	O	O	O	O	O	O	O	O
P	P	P	P	P	P	P	P	P	P
Q	Q	Q	Q	Q	Q	Q	Q	Q	Q
R	R	R	R	R	R	R	R	R	R
S	S	S	S	S	S	S	S	S	S
T	T	T	T	T	T	T	T	T	T
U	U	U	U	U	U	U	U	U	U
V	V	V	V	V	V	V	V	V	V
W	W	W	W	W	W	W	W	W	W
X	X	X	X	X	X	X	X	X	X
Y	Y	Y	Y	Y	Y	Y	Y	Y	Y
Z	Z	Z	Z	Z	Z	Z	Z	Z	Z

SORU-3.

A	A	A	A	A	A	A	A	A	A
B	B	B	B	B	B	B	B	B	B
C	C	C	C	C	C	C	C	C	C
D	D	D	D	D	D	D	D	D	D
E	E	E	E	E	E	E	E	E	E
F	F	F	F	F	F	F	F	F	F
G	G	G	G	G	G	G	G	G	G
H	H	H	H	H	H	H	H	H	H
I	I	I	I	I	I	I	I	I	I
J	J	J	J	J	J	J	J	J	J
K	K	K	K	K	K	K	K	K	K
L	L	L	L	L	L	L	L	L	L
M	M	M	M	M	M	M	M	M	M
N	N	N	N	N	N	N	N	N	N
O	O	O	O	O	O	O	O	O	O
P	P	P	P	P	P	P	P	P	P
Q	Q	Q	Q	Q	Q	Q	Q	Q	Q
R	R	R	R	R	R	R	R	R	R
S	S	S	S	S	S	S	S	S	S
T	T	T	T	T	T	T	T	T	T
U	U	U	U	U	U	U	U	U	U
V	V	V	V	V	V	V	V	V	V
W	W	W	W	W	W	W	W	W	W
X	X	X	X	X	X	X	X	X	X
Y	Y	Y	Y	Y	Y	Y	Y	Y	Y
Z	Z	Z	Z	Z	Z	Z	Z	Z	Z

Aşağıdaki soruları verilen parçaya göre cevaplayınız. Cevaplarınızı cevap kâğıdınızdaki ilgili alana yazıp kodlayınız.

TEXT-15.

Eagles have unusual eyes, which are very large in proportion from their heads. Their vision, which is estimated at 4 to 8 times stronger than that of the average human, is among the sharpest of all animals. It enables them to spot potential prey up to two miles away. As eagles descend to attack their prey, the muscles in their eyes continuously adjust the curvature of the eyeballs, which enables them to sustain focus while approaching the prey animal.

SORU-1.

Find the verb in the text which means “move downwards”, “come down”.

SORU-2.

The underlined pronoun “them” refers to ----.

SORU-3.

Find the preposition in the text which is incorrectly used.

SORU-1.

A	A	A	A	A	A	A	A	A	A	A	A	A	A	A	A	A	A
B	B	B	B	B	B	B	B	B	B	B	B	B	B	B	B	B	B
C	C	C	C	C	C	C	C	C	C	C	C	C	C	C	C	C	C
D	D	D	D	D	D	D	D	D	D	D	D	D	D	D	D	D	D
E	E	E	E	E	E	E	E	E	E	E	E	E	E	E	E	E	E
F	F	F	F	F	F	F	F	F	F	F	F	F	F	F	F	F	F
G	G	G	G	G	G	G	G	G	G	G	G	G	G	G	G	G	G
H	H	H	H	H	H	H	H	H	H	H	H	H	H	H	H	H	H
I	I	I	I	I	I	I	I	I	I	I	I	I	I	I	I	I	I
J	J	J	J	J	J	J	J	J	J	J	J	J	J	J	J	J	J
K	K	K	K	K	K	K	K	K	K	K	K	K	K	K	K	K	K
L	L	L	L	L	L	L	L	L	L	L	L	L	L	L	L	L	L
M	M	M	M	M	M	M	M	M	M	M	M	M	M	M	M	M	M
N	N	N	N	N	N	N	N	N	N	N	N	N	N	N	N	N	N
O	O	O	O	O	O	O	O	O	O	O	O	O	O	O	O	O	O
P	P	P	P	P	P	P	P	P	P	P	P	P	P	P	P	P	P
Q	Q	Q	Q	Q	Q	Q	Q	Q	Q	Q	Q	Q	Q	Q	Q	Q	Q
R	R	R	R	R	R	R	R	R	R	R	R	R	R	R	R	R	R
S	S	S	S	S	S	S	S	S	S	S	S	S	S	S	S	S	S
T	T	T	T	T	T	T	T	T	T	T	T	T	T	T	T	T	T
U	U	U	U	U	U	U	U	U	U	U	U	U	U	U	U	U	U
V	V	V	V	V	V	V	V	V	V	V	V	V	V	V	V	V	V
W	W	W	W	W	W	W	W	W	W	W	W	W	W	W	W	W	W
X	X	X	X	X	X	X	X	X	X	X	X	X	X	X	X	X	X
Y	Y	Y	Y	Y	Y	Y	Y	Y	Y	Y	Y	Y	Y	Y	Y	Y	Y
Z	Z	Z	Z	Z	Z	Z	Z	Z	Z	Z	Z	Z	Z	Z	Z	Z	Z

SORU-2.

A	A	A	A	A	A	A	A	A	A	A	A	A	A	A	A	A	A
B	B	B	B	B	B	B	B	B	B	B	B	B	B	B	B	B	B
C	C	C	C	C	C	C	C	C	C	C	C	C	C	C	C	C	C
D	D	D	D	D	D	D	D	D	D	D	D	D	D	D	D	D	D
E	E	E	E	E	E	E	E	E	E	E	E	E	E	E	E	E	E
F	F	F	F	F	F	F	F	F	F	F	F	F	F	F	F	F	F
G	G	G	G	G	G	G	G	G	G	G	G	G	G	G	G	G	G
H	H	H	H	H	H	H	H	H	H	H	H	H	H	H	H	H	H
I	I	I	I	I	I	I	I	I	I	I	I	I	I	I	I	I	I
J	J	J	J	J	J	J	J	J	J	J	J	J	J	J	J	J	J
K	K	K	K	K	K	K	K	K	K	K	K	K	K	K	K	K	K
L	L	L	L	L	L	L	L	L	L	L	L	L	L	L	L	L	L
M	M	M	M	M	M	M	M	M	M	M	M	M	M	M	M	M	M
N	N	N	N	N	N	N	N	N	N	N	N	N	N	N	N	N	N
O	O	O	O	O	O	O	O	O	O	O	O	O	O	O	O	O	O
P	P	P	P	P	P	P	P	P	P	P	P	P	P	P	P	P	P
Q	Q	Q	Q	Q	Q	Q	Q	Q	Q	Q	Q	Q	Q	Q	Q	Q	Q
R	R	R	R	R	R	R	R	R	R	R	R	R	R	R	R	R	R
S	S	S	S	S	S	S	S	S	S	S	S	S	S	S	S	S	S
T	T	T	T	T	T	T	T	T	T	T	T	T	T	T	T	T	T
U	U	U	U	U	U	U	U	U	U	U	U	U	U	U	U	U	U
V	V	V	V	V	V	V	V	V	V	V	V	V	V	V	V	V	V
W	W	W	W	W	W	W	W	W	W	W	W	W	W	W	W	W	W
X	X	X	X	X	X	X	X	X	X	X	X	X	X	X	X	X	X
Y	Y	Y	Y	Y	Y	Y	Y	Y	Y	Y	Y	Y	Y	Y	Y	Y	Y
Z	Z	Z	Z	Z	Z	Z	Z	Z	Z	Z	Z	Z	Z	Z	Z	Z	Z

SORU-3.

A	A	A	A	A	A	A	A	A	A	A	A	A	A	A	A	A	A
B	B	B	B	B	B	B	B	B	B	B	B	B	B	B	B	B	B
C	C	C	C	C	C	C	C	C	C	C	C	C	C	C	C	C	C
D	D	D	D	D	D	D	D	D	D	D	D	D	D	D	D	D	D
E	E	E	E	E	E	E	E	E	E	E	E	E	E	E	E	E	E
F	F	F	F	F	F	F	F	F	F	F	F	F	F	F	F	F	F
G	G	G	G	G	G	G	G	G	G	G	G	G	G	G	G	G	G
H	H	H	H	H	H	H	H	H	H	H	H	H	H	H	H	H	H
I	I	I	I	I	I	I	I	I	I	I	I	I	I	I	I	I	I
J	J	J	J	J	J	J	J	J	J	J	J	J	J	J	J	J	J
K	K	K	K	K	K	K	K	K	K	K	K	K	K	K	K	K	K
L	L	L	L	L	L	L	L	L	L	L	L	L	L	L	L	L	L
M	M	M	M	M	M	M	M	M	M	M	M	M	M	M	M	M	M
N	N	N	N	N	N	N	N	N	N	N	N	N	N	N	N	N	N
O	O	O	O	O	O	O	O	O	O	O	O	O	O	O	O	O	O
P	P	P	P	P	P	P	P	P	P	P	P	P	P	P	P	P	P
Q	Q	Q	Q	Q	Q	Q	Q	Q	Q	Q	Q	Q	Q	Q	Q	Q	Q
R	R	R	R	R	R	R	R	R	R	R	R	R	R	R	R	R	R
S	S	S	S	S	S	S	S	S	S	S	S	S	S	S	S	S	S
T	T	T	T	T	T	T	T	T	T	T	T	T	T	T	T	T	T
U	U	U	U	U	U	U	U	U	U	U	U	U	U	U	U	U	U
V	V	V	V	V	V	V	V	V	V	V	V	V	V	V	V	V	V
W	W	W	W	W	W	W	W	W	W	W	W	W	W	W	W	W	W
X	X	X	X	X	X	X	X	X	X	X	X	X	X	X	X	X	X
Y	Y	Y	Y	Y	Y	Y	Y	Y	Y	Y	Y	Y	Y	Y	Y	Y	Y
Z	Z	Z	Z	Z	Z	Z	Z	Z	Z	Z	Z	Z	Z	Z	Z	Z	Z

Aşağıdaki soruları verilen parçaya göre cevaplayınız. Cevaplarınızı cevap kâğıdınızdaki ilgili alana yazıp kodlayınız.

TEXT-16.

The most popular sport in ancient Greek and Rome was chariot racing. Chariot races often put riders and horses at risk of serious injury and even death. Nevertheless, these threats added to the excitement of the spectators. The races could also be watched by women, who were prohibited for watching other sports competitions. As in today's sports like football, citizens usually supported a single team, strongly identifying themselves with it. During these events, violence often broke out between rivals.

SORU-1.

Find the noun in the text which means "competitors", "opponents".

SORU-2.

The underlined pronoun "it" refers to ----.

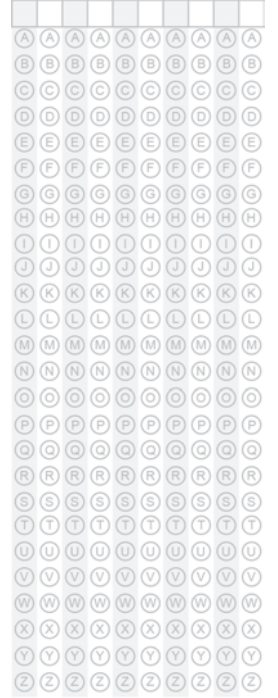
SORU-3.

Find the preposition in the text which is incorrectly used.

SORU-1.



SORU-2.



SORU-3.



Aşağıdaki soruları verilen parçaya göre cevaplayınız. Cevaplarınızı cevap kâğıdınızdaki ilgili alana yazıp kodlayınız.

TEXT-17.

Dolphins are well known for their intelligence, as well as their playful behaviour, which makes them so appealing. Their beauty and grace are part of their appeal, too. They also have a reputation from being the friendliest of all marine mammals. They enjoy being close to people. They often leap out of the water and swim alongside ships, moving at the same speed as one another. They swim very swiftly since their streamlined bodies give them agility.

SORU-1.

Find the noun in the text which means “ability to move quickly and easily”.

SORU-2.

The underlined pronoun “They” refers to ----.

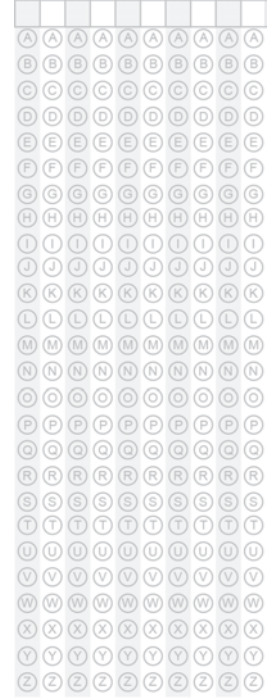
SORU-3.

Find the preposition in the text which is incorrectly used.

SORU-1.



SORU-2.



SORU-3.



Aşağıdaki soruları verilen parçaya göre cevaplayınız. Cevaplarınızı cevap kâğıdınızdaki ilgili alana yazıp kodlayınız.

TEXT-18.

Insomnia, the condition of being unable to sleep over long periods of time, may result from certain underlying disorders. Restless legs syndrome is one of those disorders leading for insomnia. This is a neurological case which gives one an uncomfortable sensation of an urge to move their legs. The syndrome is mostly experienced during periods of inactivity or when the body is at rest. It gets worse in the transition between wake and sleep.

SORU-1.

Find the noun in the text which means the opposite of “lack of desire”, “unwillingness”.

SORU-2.

The underlined pronoun “It” refers to ----.

SORU-3.

Find the preposition in the text which is incorrectly used.

SORU-1.

A	A	A	A	A	A	A	A	A	A
B	B	B	B	B	B	B	B	B	B
C	C	C	C	C	C	C	C	C	C
D	D	D	D	D	D	D	D	D	D
E	E	E	E	E	E	E	E	E	E
F	F	F	F	F	F	F	F	F	F
G	G	G	G	G	G	G	G	G	G
H	H	H	H	H	H	H	H	H	H
I	I	I	I	I	I	I	I	I	I
J	J	J	J	J	J	J	J	J	J
K	K	K	K	K	K	K	K	K	K
L	L	L	L	L	L	L	L	L	L
M	M	M	M	M	M	M	M	M	M
N	N	N	N	N	N	N	N	N	N
O	O	O	O	O	O	O	O	O	O
P	P	P	P	P	P	P	P	P	P
Q	Q	Q	Q	Q	Q	Q	Q	Q	Q
R	R	R	R	R	R	R	R	R	R
S	S	S	S	S	S	S	S	S	S
T	T	T	T	T	T	T	T	T	T
U	U	U	U	U	U	U	U	U	U
V	V	V	V	V	V	V	V	V	V
W	W	W	W	W	W	W	W	W	W
X	X	X	X	X	X	X	X	X	X
Y	Y	Y	Y	Y	Y	Y	Y	Y	Y
Z	Z	Z	Z	Z	Z	Z	Z	Z	Z

SORU-2.

A	A	A	A	A	A	A	A	A	A
B	B	B	B	B	B	B	B	B	B
C	C	C	C	C	C	C	C	C	C
D	D	D	D	D	D	D	D	D	D
E	E	E	E	E	E	E	E	E	E
F	F	F	F	F	F	F	F	F	F
G	G	G	G	G	G	G	G	G	G
H	H	H	H	H	H	H	H	H	H
I	I	I	I	I	I	I	I	I	I
J	J	J	J	J	J	J	J	J	J
K	K	K	K	K	K	K	K	K	K
L	L	L	L	L	L	L	L	L	L
M	M	M	M	M	M	M	M	M	M
N	N	N	N	N	N	N	N	N	N
O	O	O	O	O	O	O	O	O	O
P	P	P	P	P	P	P	P	P	P
Q	Q	Q	Q	Q	Q	Q	Q	Q	Q
R	R	R	R	R	R	R	R	R	R
S	S	S	S	S	S	S	S	S	S
T	T	T	T	T	T	T	T	T	T
U	U	U	U	U	U	U	U	U	U
V	V	V	V	V	V	V	V	V	V
W	W	W	W	W	W	W	W	W	W
X	X	X	X	X	X	X	X	X	X
Y	Y	Y	Y	Y	Y	Y	Y	Y	Y
Z	Z	Z	Z	Z	Z	Z	Z	Z	Z

SORU-3.

A	A	A	A	A	A	A	A	A	A
B	B	B	B	B	B	B	B	B	B
C	C	C	C	C	C	C	C	C	C
D	D	D	D	D	D	D	D	D	D
E	E	E	E	E	E	E	E	E	E
F	F	F	F	F	F	F	F	F	F
G	G	G	G	G	G	G	G	G	G
H	H	H	H	H	H	H	H	H	H
I	I	I	I	I	I	I	I	I	I
J	J	J	J	J	J	J	J	J	J
K	K	K	K	K	K	K	K	K	K
L	L	L	L	L	L	L	L	L	L
M	M	M	M	M	M	M	M	M	M
N	N	N	N	N	N	N	N	N	N
O	O	O	O	O	O	O	O	O	O
P	P	P	P	P	P	P	P	P	P
Q	Q	Q	Q	Q	Q	Q	Q	Q	Q
R	R	R	R	R	R	R	R	R	R
S	S	S	S	S	S	S	S	S	S
T	T	T	T	T	T	T	T	T	T
U	U	U	U	U	U	U	U	U	U
V	V	V	V	V	V	V	V	V	V
W	W	W	W	W	W	W	W	W	W
X	X	X	X	X	X	X	X	X	X
Y	Y	Y	Y	Y	Y	Y	Y	Y	Y
Z	Z	Z	Z	Z	Z	Z	Z	Z	Z

Aşağıdaki soruları verilen parçaya göre cevaplayınız. Cevaplarınızı cevap kâğıdınızdaki ilgili alana yazıp kodlayınız.

TEXT-19.

There are many factors, besides age, that account for the ease with which children can pick up a new language. Adults, on the other hand, have other advantages that enable them to easily acquire a new language. Actually, there are differences between the ways in which younger and older learners approach a new language. Adults' skills differ from those of children. They can make use of abstract reasoning, for example, which makes them particularly good at learning vocabulary, as compared by children.

SORU-1.

Find the verb in the text which means "deal or cope with something".

SORU-2.

The underlined pronoun "those" refers to ----.

SORU-3.

Find the preposition in the text which is incorrectly used.

SORU-1.

A	A	A	A	A	A	A	A	A	A
B	B	B	B	B	B	B	B	B	B
C	C	C	C	C	C	C	C	C	C
D	D	D	D	D	D	D	D	D	D
E	E	E	E	E	E	E	E	E	E
F	F	F	F	F	F	F	F	F	F
G	G	G	G	G	G	G	G	G	G
H	H	H	H	H	H	H	H	H	H
I	I	I	I	I	I	I	I	I	I
J	J	J	J	J	J	J	J	J	J
K	K	K	K	K	K	K	K	K	K
L	L	L	L	L	L	L	L	L	L
M	M	M	M	M	M	M	M	M	M
N	N	N	N	N	N	N	N	N	N
O	O	O	O	O	O	O	O	O	O
P	P	P	P	P	P	P	P	P	P
Q	Q	Q	Q	Q	Q	Q	Q	Q	Q
R	R	R	R	R	R	R	R	R	R
S	S	S	S	S	S	S	S	S	S
T	T	T	T	T	T	T	T	T	T
U	U	U	U	U	U	U	U	U	U
V	V	V	V	V	V	V	V	V	V
W	W	W	W	W	W	W	W	W	W
X	X	X	X	X	X	X	X	X	X
Y	Y	Y	Y	Y	Y	Y	Y	Y	Y
Z	Z	Z	Z	Z	Z	Z	Z	Z	Z

SORU-2.

A	A	A	A	A	A	A	A	A	A
B	B	B	B	B	B	B	B	B	B
C	C	C	C	C	C	C	C	C	C
D	D	D	D	D	D	D	D	D	D
E	E	E	E	E	E	E	E	E	E
F	F	F	F	F	F	F	F	F	F
G	G	G	G	G	G	G	G	G	G
H	H	H	H	H	H	H	H	H	H
I	I	I	I	I	I	I	I	I	I
J	J	J	J	J	J	J	J	J	J
K	K	K	K	K	K	K	K	K	K
L	L	L	L	L	L	L	L	L	L
M	M	M	M	M	M	M	M	M	M
N	N	N	N	N	N	N	N	N	N
O	O	O	O	O	O	O	O	O	O
P	P	P	P	P	P	P	P	P	P
Q	Q	Q	Q	Q	Q	Q	Q	Q	Q
R	R	R	R	R	R	R	R	R	R
S	S	S	S	S	S	S	S	S	S
T	T	T	T	T	T	T	T	T	T
U	U	U	U	U	U	U	U	U	U
V	V	V	V	V	V	V	V	V	V
W	W	W	W	W	W	W	W	W	W
X	X	X	X	X	X	X	X	X	X
Y	Y	Y	Y	Y	Y	Y	Y	Y	Y
Z	Z	Z	Z	Z	Z	Z	Z	Z	Z

SORU-3.

A	A	A	A	A	A	A	A	A	A
B	B	B	B	B	B	B	B	B	B
C	C	C	C	C	C	C	C	C	C
D	D	D	D	D	D	D	D	D	D
E	E	E	E	E	E	E	E	E	E
F	F	F	F	F	F	F	F	F	F
G	G	G	G	G	G	G	G	G	G
H	H	H	H	H	H	H	H	H	H
I	I	I	I	I	I	I	I	I	I
J	J	J	J	J	J	J	J	J	J
K	K	K	K	K	K	K	K	K	K
L	L	L	L	L	L	L	L	L	L
M	M	M	M	M	M	M	M	M	M
N	N	N	N	N	N	N	N	N	N
O	O	O	O	O	O	O	O	O	O
P	P	P	P	P	P	P	P	P	P
Q	Q	Q	Q	Q	Q	Q	Q	Q	Q
R	R	R	R	R	R	R	R	R	R
S	S	S	S	S	S	S	S	S	S
T	T	T	T	T	T	T	T	T	T
U	U	U	U	U	U	U	U	U	U
V	V	V	V	V	V	V	V	V	V
W	W	W	W	W	W	W	W	W	W
X	X	X	X	X	X	X	X	X	X
Y	Y	Y	Y	Y	Y	Y	Y	Y	Y
Z	Z	Z	Z	Z	Z	Z	Z	Z	Z

Aşağıdaki soruları verilen parçaya göre cevaplayınız. Cevaplarınızı cevap kâğıdınızdaki ilgili alana yazıp kodlayınız.

TEXT-20.

The number of galaxies scattered across the universe is beyond imagination. Recent images sent from the Hubble Space Telescope indicate that there are over two trillion galaxies which populate space. This is about ten times the number scientists were able to estimate previously. Studying the new images, scientists now conclude that only about ten percent of the galaxies in the universe are observable into the Earth. That means the current technological methods fail to detect a big majority of the galaxies that exist out there in the universe.

SORU-1.

Find the verb in the text which means “guess” or “calculate approximately”.

SORU-2.

The underlined pronoun “that” refers to ----.

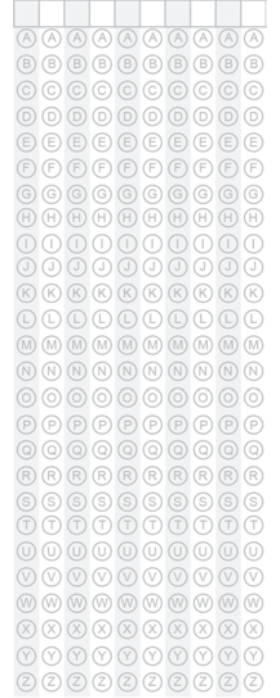
SORU-3.

Find the preposition in the text which is incorrectly used.

SORU-1.



SORU-2.



SORU-3.



Aşağıdaki soruları verilen parçaya göre cevaplayınız. Cevaplarınızı cevap kâğıdınızdaki ilgili alana yazıp kodlayınız.

TEXT-21.

Fossilized human skeletons reveal that the human brain has shrunk over the past 10,000 years. The fact that humans now store and process information in books, computers and online may imply that they can get on with smaller brains. The shrinkage may have resulted from the decline in the average body size, which is possibly related in the warming climate on the earth during the 10,000 years after the last Ice Age. Colder climates demand larger bodies because they conserve heat better.

SORU-1.

Find the verb in the text which means the opposite of “hide”, “cover”.

SORU-2.

The underlined pronoun “they” refers to ----.

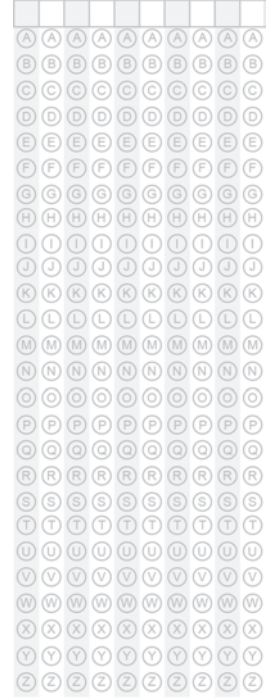
SORU-3.

Find the preposition in the text which is incorrectly used.

SORU-1.



SORU-2.



SORU-3.



Aşağıdaki soruları verilen parçaya göre cevaplayınız. Cevaplarınızı cevap kâğıdınızdaki ilgili alana yazıp kodlayınız.

TEXT-22.

Fathers play an important role in children's lives and development. Children of involved fathers have an advantage, both socially and academically, over those without a good father-child relationship. It has been observed that kids whose fathers are concerned by their progress in school and their daily activities do better in school than kids who don't have their fathers' input. Numerous studies have also reached the same conclusion about the link between the father's involvement and the child's academic success.

SORU-1.

Find the noun in the text which means "contribution", "support".

SORU-2.

The underlined pronoun "those" refers to ----.

SORU-3.

Find the preposition in the text which is incorrectly used.

SORU-1.

A	A	A	A	A	A	A	A	A	A
B	B	B	B	B	B	B	B	B	B
C	C	C	C	C	C	C	C	C	C
D	D	D	D	D	D	D	D	D	D
E	E	E	E	E	E	E	E	E	E
F	F	F	F	F	F	F	F	F	F
G	G	G	G	G	G	G	G	G	G
H	H	H	H	H	H	H	H	H	H
I	I	I	I	I	I	I	I	I	I
J	J	J	J	J	J	J	J	J	J
K	K	K	K	K	K	K	K	K	K
L	L	L	L	L	L	L	L	L	L
M	M	M	M	M	M	M	M	M	M
N	N	N	N	N	N	N	N	N	N
O	O	O	O	O	O	O	O	O	O
P	P	P	P	P	P	P	P	P	P
Q	Q	Q	Q	Q	Q	Q	Q	Q	Q
R	R	R	R	R	R	R	R	R	R
S	S	S	S	S	S	S	S	S	S
T	T	T	T	T	T	T	T	T	T
U	U	U	U	U	U	U	U	U	U
V	V	V	V	V	V	V	V	V	V
W	W	W	W	W	W	W	W	W	W
X	X	X	X	X	X	X	X	X	X
Y	Y	Y	Y	Y	Y	Y	Y	Y	Y
Z	Z	Z	Z	Z	Z	Z	Z	Z	Z

SORU-2.

A	A	A	A	A	A	A	A	A	A
B	B	B	B	B	B	B	B	B	B
C	C	C	C	C	C	C	C	C	C
D	D	D	D	D	D	D	D	D	D
E	E	E	E	E	E	E	E	E	E
F	F	F	F	F	F	F	F	F	F
G	G	G	G	G	G	G	G	G	G
H	H	H	H	H	H	H	H	H	H
I	I	I	I	I	I	I	I	I	I
J	J	J	J	J	J	J	J	J	J
K	K	K	K	K	K	K	K	K	K
L	L	L	L	L	L	L	L	L	L
M	M	M	M	M	M	M	M	M	M
N	N	N	N	N	N	N	N	N	N
O	O	O	O	O	O	O	O	O	O
P	P	P	P	P	P	P	P	P	P
Q	Q	Q	Q	Q	Q	Q	Q	Q	Q
R	R	R	R	R	R	R	R	R	R
S	S	S	S	S	S	S	S	S	S
T	T	T	T	T	T	T	T	T	T
U	U	U	U	U	U	U	U	U	U
V	V	V	V	V	V	V	V	V	V
W	W	W	W	W	W	W	W	W	W
X	X	X	X	X	X	X	X	X	X
Y	Y	Y	Y	Y	Y	Y	Y	Y	Y
Z	Z	Z	Z	Z	Z	Z	Z	Z	Z

SORU-3.

A	A	A	A	A	A	A	A	A	A
B	B	B	B	B	B	B	B	B	B
C	C	C	C	C	C	C	C	C	C
D	D	D	D	D	D	D	D	D	D
E	E	E	E	E	E	E	E	E	E
F	F	F	F	F	F	F	F	F	F
G	G	G	G	G	G	G	G	G	G
H	H	H	H	H	H	H	H	H	H
I	I	I	I	I	I	I	I	I	I
J	J	J	J	J	J	J	J	J	J
K	K	K	K	K	K	K	K	K	K
L	L	L	L	L	L	L	L	L	L
M	M	M	M	M	M	M	M	M	M
N	N	N	N	N	N	N	N	N	N
O	O	O	O	O	O	O	O	O	O
P	P	P	P	P	P	P	P	P	P
Q	Q	Q	Q	Q	Q	Q	Q	Q	Q
R	R	R	R	R	R	R	R	R	R
S	S	S	S	S	S	S	S	S	S
T	T	T	T	T	T	T	T	T	T
U	U	U	U	U	U	U	U	U	U
V	V	V	V	V	V	V	V	V	V
W	W	W	W	W	W	W	W	W	W
X	X	X	X	X	X	X	X	X	X
Y	Y	Y	Y	Y	Y	Y	Y	Y	Y
Z	Z	Z	Z	Z	Z	Z	Z	Z	Z

Aşağıdaki soruları verilen parçaya göre cevaplayınız. Cevaplarınızı cevap kâğıdınızdaki ilgili alana yazıp kodlayınız.

TEXT-23.

Rabbits are prey animals, so they have to be constantly aware of their surroundings. They are highly active at dawn and directly before dusk. Some may be active, though very rarely, at a moonless night or during a cloudy, grey day, too. Those for captivity sleep roughly eight or nine hours daily. Like most other prey animals, rabbits typically sleep with their eyes open. Sudden movements and noises will abruptly wake them up, promptly alerting them to predators and other dangers.

SORU-1.

Find the adverb in the text which means “continually”, “all the time”.

SORU-2.

The underlined pronoun “them” refers to ----.

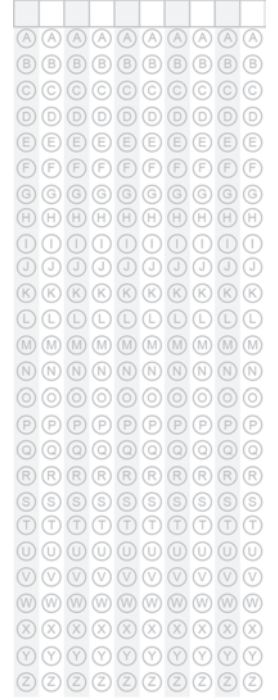
SORU-3.

Find the preposition in the text which is incorrectly used.

SORU-1.



SORU-2.



SORU-3.



Aşağıdaki soruları verilen parçaya göre cevaplayınız. Cevaplarınızı cevap kâğıdınızdaki ilgili alana yazıp kodlayınız.

TEXT-24.

It shouldn't come as a surprise that cycling has many health benefits. A study found that elderly patients having knee problems actually improved their condition when cycling was introduced around their daily routines even though it was just for a few minutes. A new study suggests that cycling, if done on a regular basis, increases people's lifespans. It also shows that occasional bike commuters will also benefit from it despite the downsides and dangers of commuting by bike in cities where the traffic is very heavy.

SORU-1.

Find the noun in the text which means the opposite of "advantages".

SORU-2.

The underlined pronoun "it" refers to ----.

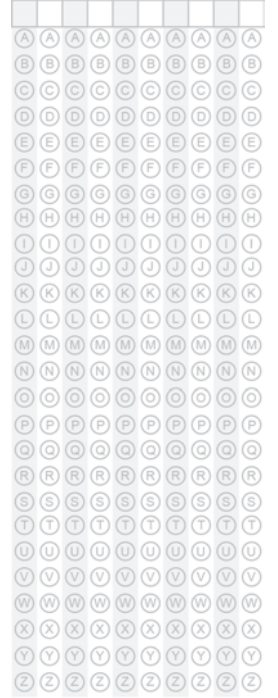
SORU-3.

Find the preposition in the text which is incorrectly used.

SORU-1.



SORU-2.



SORU-3.



Aşağıdaki soruları verilen parçaya göre cevaplayınız. Cevaplarınızı cevap kâğıdınızdaki ilgili alana yazıp kodlayınız.

TEXT-25.

Spanking has always been a controversial issue among parents. While many parents today do not approve for spanking, others think it is necessary in order to make kids more compliant and respectful or to end their aggressive behaviour. And some parents turn to spanking only when they lose patience with their kids, who continually misbehave, or when they are disgusted by their rebellious attitude towards them.

SORU-1.

Find the adjective in the text which means the opposite of “obedient” or “dutiful”.

SORU 1 için Alternatif:

Find the adjective in the text which means “obedient” or “dutiful”.

SORU-2.

The underlined pronoun “who” refers to ----.

SORU-3.

Find the preposition in the text which is incorrectly used.

SORU-1.

A	A	A	A	A	A	A	A	A	A
B	B	B	B	B	B	B	B	B	B
C	C	C	C	C	C	C	C	C	C
D	D	D	D	D	D	D	D	D	D
E	E	E	E	E	E	E	E	E	E
F	F	F	F	F	F	F	F	F	F
G	G	G	G	G	G	G	G	G	G
H	H	H	H	H	H	H	H	H	H
I	I	I	I	I	I	I	I	I	I
J	J	J	J	J	J	J	J	J	J
K	K	K	K	K	K	K	K	K	K
L	L	L	L	L	L	L	L	L	L
M	M	M	M	M	M	M	M	M	M
N	N	N	N	N	N	N	N	N	N
O	O	O	O	O	O	O	O	O	O
P	P	P	P	P	P	P	P	P	P
Q	Q	Q	Q	Q	Q	Q	Q	Q	Q
R	R	R	R	R	R	R	R	R	R
S	S	S	S	S	S	S	S	S	S
T	T	T	T	T	T	T	T	T	T
U	U	U	U	U	U	U	U	U	U
V	V	V	V	V	V	V	V	V	V
W	W	W	W	W	W	W	W	W	W
X	X	X	X	X	X	X	X	X	X
Y	Y	Y	Y	Y	Y	Y	Y	Y	Y
Z	Z	Z	Z	Z	Z	Z	Z	Z	Z

SORU-1 ALTERNATİF

A	A	A	A	A	A	A	A	A	A
B	B	B	B	B	B	B	B	B	B
C	C	C	C	C	C	C	C	C	C
D	D	D	D	D	D	D	D	D	D
E	E	E	E	E	E	E	E	E	E
F	F	F	F	F	F	F	F	F	F
G	G	G	G	G	G	G	G	G	G
H	H	H	H	H	H	H	H	H	H
I	I	I	I	I	I	I	I	I	I
J	J	J	J	J	J	J	J	J	J
K	K	K	K	K	K	K	K	K	K
L	L	L	L	L	L	L	L	L	L
M	M	M	M	M	M	M	M	M	M
N	N	N	N	N	N	N	N	N	N
O	O	O	O	O	O	O	O	O	O
P	P	P	P	P	P	P	P	P	P
Q	Q	Q	Q	Q	Q	Q	Q	Q	Q
R	R	R	R	R	R	R	R	R	R
S	S	S	S	S	S	S	S	S	S
T	T	T	T	T	T	T	T	T	T
U	U	U	U	U	U	U	U	U	U
V	V	V	V	V	V	V	V	V	V
W	W	W	W	W	W	W	W	W	W
X	X	X	X	X	X	X	X	X	X
Y	Y	Y	Y	Y	Y	Y	Y	Y	Y
Z	Z	Z	Z	Z	Z	Z	Z	Z	Z

SORU-2.

A	A	A	A	A	A	A	A	A	A
B	B	B	B	B	B	B	B	B	B
C	C	C	C	C	C	C	C	C	C
D	D	D	D	D	D	D	D	D	D
E	E	E	E	E	E	E	E	E	E
F	F	F	F	F	F	F	F	F	F
G	G	G	G	G	G	G	G	G	G
H	H	H	H	H	H	H	H	H	H
I	I	I	I	I	I	I	I	I	I
J	J	J	J	J	J	J	J	J	J
K	K	K	K	K	K	K	K	K	K
L	L	L	L	L	L	L	L	L	L
M	M	M	M	M	M	M	M	M	M
N	N	N	N	N	N	N	N	N	N
O	O	O	O	O	O	O	O	O	O
P	P	P	P	P	P	P	P	P	P
Q	Q	Q	Q	Q	Q	Q	Q	Q	Q
R	R	R	R	R	R	R	R	R	R
S	S	S	S	S	S	S	S	S	S
T	T	T	T	T	T	T	T	T	T
U	U	U	U	U	U	U	U	U	U
V	V	V	V	V	V	V	V	V	V
W	W	W	W	W	W	W	W	W	W
X	X	X	X	X	X	X	X	X	X
Y	Y	Y	Y	Y	Y	Y	Y	Y	Y
Z	Z	Z	Z	Z	Z	Z	Z	Z	Z

SORU-3.

A	A	A	A	A	A	A	A	A	A
B	B	B	B	B	B	B	B	B	B
C	C	C	C	C	C	C	C	C	C
D	D	D	D	D	D	D	D	D	D
E	E	E	E	E	E	E	E	E	E
F	F	F	F	F	F	F	F	F	F
G	G	G	G	G	G	G	G	G	G
H	H	H	H	H	H	H	H	H	H
I	I	I	I	I	I	I	I	I	I
J	J	J	J	J	J	J	J	J	J
K	K	K	K	K	K	K	K	K	K
L	L	L	L	L	L	L	L	L	L
M	M	M	M	M	M	M	M	M	M
N	N	N	N	N	N	N	N	N	N
O	O	O	O	O	O	O	O	O	O
P	P	P	P	P	P	P	P	P	P
Q	Q	Q	Q	Q	Q	Q	Q	Q	Q
R	R	R	R	R	R	R	R	R	R
S	S	S	S	S	S	S	S	S	S
T	T	T	T	T	T	T	T	T	T
U	U	U	U	U	U	U	U	U	U
V	V	V	V	V	V	V	V	V	V
W	W	W	W	W	W	W	W	W	W
X	X	X	X	X	X	X	X	X	X
Y	Y	Y	Y	Y	Y	Y	Y	Y	Y
Z	Z	Z	Z	Z	Z	Z	Z	Z	Z

Aşağıdaki soruları verilen parçaya göre cevaplayınız. Cevaplarınızı cevap kâğıdınızdaki ilgili alana yazıp kodlayınız.

TEXT-26.

Many parents frown upon video games as being time-wasters. They focus on the potential dangers of these games rather than the benefits. What's more, some education experts claim that they corrupt kids. They also blame them by making kids commit violence or display anti-social behaviour. However, if played in moderation, video games help kids develop certain skills. They also release kids' anger or frustration and teach them to coordinate their brain's reaction and interpretation with their hand and fingertip movements.

SORU-1.

Find the verb in the text which means "cause someone to behave in a wrong way".

SORU-2.

The underlined pronoun "them" refers to ----.

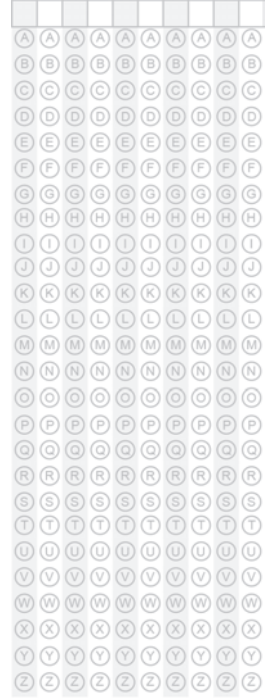
SORU-3.

Find the preposition in the text which is incorrectly used.

SORU-1.



SORU-2.



SORU-3.



Aşağıdaki soruları verilen parçaya göre cevaplayınız. Cevaplarınızı cevap kâğıdınızdaki ilgili alana yazıp kodlayınız.

TEXT-27.

When guests arrive at your home, your dog will go into a frenzy and bark, leap and race around the room and even the other rooms, trying to make them pay attention to him. He will be enthusiastic about playing with the guests' kids and keeping them entertained. He will try to be very amusing, but your cautious cat will stay aloof and distant and observe the newcomers along a distance, maybe atop the fridge. If you and the guests are having dinner, while your dog tries to steal food off the table, the cat wanting to be invisible will lie under the couch.

SORU-1.

Find the adjective in the text which means “careful about avoiding danger or strangers”.

SORU 1 için Alternatif:

Complete the sentence below by using only one word from the text.

“The remote objects that are ---- to the naked eye can be observed through a telescope.”

SORU-2.

The underlined pronoun “them” refers to ----.

SORU-3.

Find the preposition in the text which is incorrectly used.

SORU-1.



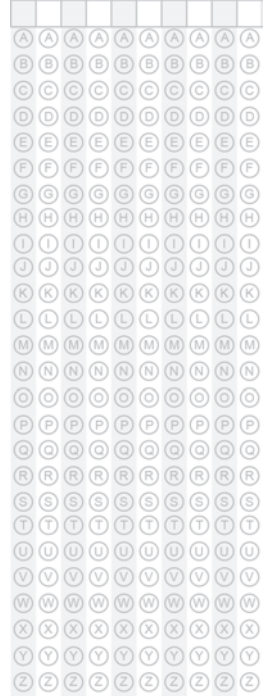
SORU-1 ALTERNATİF



SORU-2.



SORU-3.



Aşağıdaki soruları verilen parçaya göre cevaplayınız. Cevaplarınızı cevap kâğıdınızdaki ilgili alana yazıp kodlayınız.

TEXT-28.

The images that appear in our dreams may represent emotional concepts. Among the most commonly seen ones are planes, buses and other vehicles. These may reflect what direction our life is taking and how much control we have over the path ahead of us. They symbolize our power to make a transition from where we stand on life to a new destination or objective. They may also highlight a big obstacle we must cope with or a difficult issue that we need to work through and resolve.

SORU-1.

Find the verb in the text which means “find a solution to a problem”.

SORU-2.

The underlined pronoun “ones” refers to ----.

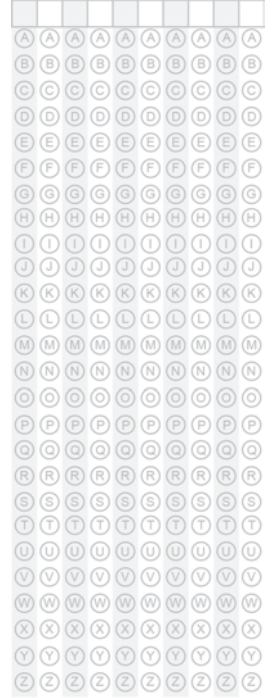
SORU-3.

Find the preposition in the text which is incorrectly used.

SORU-1.



SORU-2.



SORU-3.



Aşağıdaki soruları verilen parçaya göre cevaplayınız. Cevaplarınızı cevap kâğıdınızdaki ilgili alana yazıp kodlayınız.

TEXT-29.

The Olympic flame has been all around the world; it has gone into space and even scaled Mount Everest. The flame made its first appearance of the modern era at Amsterdam 1928 Summer Olympics, where it was lit on top of a tower overlooking the Olympic Stadium, which was the place at athletics events. It also presided over the scene at Los Angeles' Olympic Stadium four years later, this time atop the gateway to the arena, which resembled the famous Arc de Triomphe monument in Paris.

SORU-1.

Which verb in the text can be replaced with the verb "ascended" or "climbed"?

SORU 1 için Alternatif:

Which verb in the text can be replaced with the phrase "looked like"?

SORU-2.

The underlined pronoun "It" refers to ----.

SORU-3.

Find the preposition in the text which is incorrectly used.

SORU-1.

A	A	A	A	A	A	A	A	A	A
B	B	B	B	B	B	B	B	B	B
C	C	C	C	C	C	C	C	C	C
D	D	D	D	D	D	D	D	D	D
E	E	E	E	E	E	E	E	E	E
F	F	F	F	F	F	F	F	F	F
G	G	G	G	G	G	G	G	G	G
H	H	H	H	H	H	H	H	H	H
I	I	I	I	I	I	I	I	I	I
J	J	J	J	J	J	J	J	J	J
K	K	K	K	K	K	K	K	K	K
L	L	L	L	L	L	L	L	L	L
M	M	M	M	M	M	M	M	M	M
N	N	N	N	N	N	N	N	N	N
O	O	O	O	O	O	O	O	O	O
P	P	P	P	P	P	P	P	P	P
Q	Q	Q	Q	Q	Q	Q	Q	Q	Q
R	R	R	R	R	R	R	R	R	R
S	S	S	S	S	S	S	S	S	S
T	T	T	T	T	T	T	T	T	T
U	U	U	U	U	U	U	U	U	U
V	V	V	V	V	V	V	V	V	V
W	W	W	W	W	W	W	W	W	W
X	X	X	X	X	X	X	X	X	X
Y	Y	Y	Y	Y	Y	Y	Y	Y	Y
Z	Z	Z	Z	Z	Z	Z	Z	Z	Z

SORU-1 ALTERNATİF

A	A	A	A	A	A	A	A	A	A
B	B	B	B	B	B	B	B	B	B
C	C	C	C	C	C	C	C	C	C
D	D	D	D	D	D	D	D	D	D
E	E	E	E	E	E	E	E	E	E
F	F	F	F	F	F	F	F	F	F
G	G	G	G	G	G	G	G	G	G
H	H	H	H	H	H	H	H	H	H
I	I	I	I	I	I	I	I	I	I
J	J	J	J	J	J	J	J	J	J
K	K	K	K	K	K	K	K	K	K
L	L	L	L	L	L	L	L	L	L
M	M	M	M	M	M	M	M	M	M
N	N	N	N	N	N	N	N	N	N
O	O	O	O	O	O	O	O	O	O
P	P	P	P	P	P	P	P	P	P
Q	Q	Q	Q	Q	Q	Q	Q	Q	Q
R	R	R	R	R	R	R	R	R	R
S	S	S	S	S	S	S	S	S	S
T	T	T	T	T	T	T	T	T	T
U	U	U	U	U	U	U	U	U	U
V	V	V	V	V	V	V	V	V	V
W	W	W	W	W	W	W	W	W	W
X	X	X	X	X	X	X	X	X	X
Y	Y	Y	Y	Y	Y	Y	Y	Y	Y
Z	Z	Z	Z	Z	Z	Z	Z	Z	Z

SORU-2.

A	A	A	A	A	A	A	A	A	A
B	B	B	B	B	B	B	B	B	B
C	C	C	C	C	C	C	C	C	C
D	D	D	D	D	D	D	D	D	D
E	E	E	E	E	E	E	E	E	E
F	F	F	F	F	F	F	F	F	F
G	G	G	G	G	G	G	G	G	G
H	H	H	H	H	H	H	H	H	H
I	I	I	I	I	I	I	I	I	I
J	J	J	J	J	J	J	J	J	J
K	K	K	K	K	K	K	K	K	K
L	L	L	L	L	L	L	L	L	L
M	M	M	M	M	M	M	M	M	M
N	N	N	N	N	N	N	N	N	N
O	O	O	O	O	O	O	O	O	O
P	P	P	P	P	P	P	P	P	P
Q	Q	Q	Q	Q	Q	Q	Q	Q	Q
R	R	R	R	R	R	R	R	R	R
S	S	S	S	S	S	S	S	S	S
T	T	T	T	T	T	T	T	T	T
U	U	U	U	U	U	U	U	U	U
V	V	V	V	V	V	V	V	V	V
W	W	W	W	W	W	W	W	W	W
X	X	X	X	X	X	X	X	X	X
Y	Y	Y	Y	Y	Y	Y	Y	Y	Y
Z	Z	Z	Z	Z	Z	Z	Z	Z	Z

SORU-3.

A	A	A	A	A	A	A	A	A	A
B	B	B	B	B	B	B	B	B	B
C	C	C	C	C	C	C	C	C	C
D	D	D	D	D	D	D	D	D	D
E	E	E	E	E	E	E	E	E	E
F	F	F	F	F	F	F	F	F	F
G	G	G	G	G	G	G	G	G	G
H	H	H	H	H	H	H	H	H	H
I	I	I	I	I	I	I	I	I	I
J	J	J	J	J	J	J	J	J	J
K	K	K	K	K	K	K	K	K	K
L	L	L	L	L	L	L	L	L	L
M	M	M	M	M	M	M	M	M	M
N	N	N	N	N	N	N	N	N	N
O	O	O	O	O	O	O	O	O	O
P	P	P	P	P	P	P	P	P	P
Q	Q	Q	Q	Q	Q	Q	Q	Q	Q
R	R	R	R	R	R	R	R	R	R
S	S	S	S	S	S	S	S	S	S
T	T	T	T	T	T	T	T	T	T
U	U	U	U	U	U	U	U	U	U
V	V	V	V	V	V	V	V	V	V
W	W	W	W	W	W	W	W	W	W
X	X	X	X	X	X	X	X	X	X
Y	Y	Y	Y	Y	Y	Y	Y	Y	Y
Z	Z	Z	Z	Z	Z	Z	Z	Z	Z

Aşağıdaki soruları verilen parçaya göre cevaplayınız. Cevaplarınızı cevap kâğıdınızdaki ilgili alana yazıp kodlayınız.

TEXT-30.

Roses are mostly grown for their beauty and fragrance. They vary in size and shape. They grow on shrubs and their stems have thorns on them. Most species are native to Asia, but a few also grow naturally across North America, northwestern Africa and Europe. Roses have a variety of colours to choose from, each representing a different sentiment. Red roses are associated by love and passion; yellow roses convey empathy and joy while pink ones symbolize poetic romance.

SORU-1.

Find the noun in the text which means “feeling”, “emotion”.

SORU-2.

The underlined phrase “them” refers to ----.

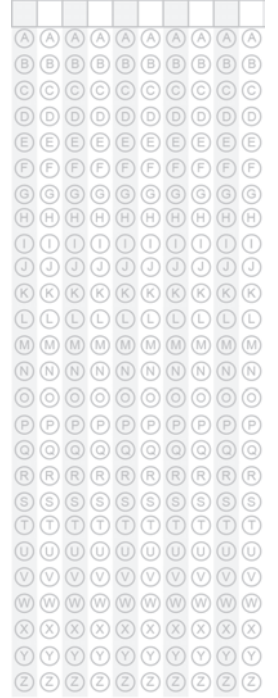
SORU-3.

Find the preposition in the text which is incorrectly used.

SORU-1.



SORU-2.



SORU-3.



LYS-5 KISA CEVAPLI SORU ÖRNEKLERİ CEVAP ANAHTARI

TEXT-1

Soru 1: shine
Soru 2: corvids
Soru 3: from

TEXT-2

Soru 1: combatants
Soru 2: nations
Soru 3: for

TEXT-3

Soru 1: revenue
Soru 2: growth
Soru 3: to

TEXT-4

Soru 1: collision
Soru 1 için Alternatif: vanished
Soru 2: theories
Soru 3: on

TEXT-5

Soru 1: enhance
Soru 1 için Alternatif: earnest
Soru 2: power
Soru 3: over

TEXT-6

Soru 1: prolong
Soru 1 için Alternatif: promote
Soru 2: dietitians
Soru 3: from

TEXT-7

Soru 1: modestly
Soru 2: presidents
Soru 3: With

TEXT-8

Soru 1: interact
Soru 2: faces
Soru 2 için Alternatif: humans
Soru 3: from

TEXT-9

Soru 1: offensive
Soru 2: salaries
Soru 3: with

TEXT-10

Soru 1: apparent
Soru 2: illness
Soru 3: On

TEXT-11

Soru 1: eccentric
Soru 2: clowns
Soru 3: with

TEXT-12

Soru 1: disregard
Soru 2: Symptoms
Soru 3: from

TEXT-13

Soru 1: strife
Soru 2: disease
Soru 3: for

TEXT-14

Soru 1: profit
Soru 2: career
Soru 3: on

TEXT-15

Soru 1: descend
Soru 2: eagles
Soru 3: from

TEXT-16

Soru 1: rivals
Soru 2: team
Soru 3: for

TEXT-17

Soru 1: agility
Soru 2: Dolphins
Soru 3: from

TEXT-18

Soru 1: urge
Soru 2: Syndrome
Soru 3: for

TEXT-19

Soru 1: approach
Soru 2: skills
Soru 3: by

TEXT-20:

Soru 1: estimate
Soru 2: galaxies
Soru 3: into

TEXT-21

Soru 1: reveal
Soru 2: humans
Soru 3: in

TEXT-22

Soru 1: input
Soru 2: children
Soru 3: by

TEXT-23

Soru 1: constantly
Soru 2: rabbits
Soru 3: for

TEXT-24

Soru 1: downsides
Soru 2: cycling
Soru 3: around

TEXT-25

Soru 1: rebellious
Soru 1 için Alternatif: compliant
Soru 2: kids
Soru 3: for

TEXT-26

Soru 1: corrupt
Soru 2: kids
Soru 3: by

TEXT-27

Soru 1: cautious
Soru 1 için Alternatif: invisible
Soru 2: guests
Soru 3: along

TEXT-28

Soru 1: resolve
Soru 2: images
Soru 3: on

TEXT-29

Soru 1: scaled
Soru 1 için Alternatif: resembled
Soru 2: Flame
Soru 3: at

TEXT-30

Soru 1: sentiment
Soru 2: stems
Soru 3: by